

CBR1 Rabbit mAb

货号: **AYM30273**

产品信息

反应	Human
宿主	Rabbit
克隆性	Monoclonal
预测反应	
应用	WB IHC IF/ICC
推荐浓度	WB: 1:500 - 1:2000 IHC: 1:50 - 1:200 IF/ICC: 1:50 - 1:200
理论分子量	18kDa/30kDa
实测分子量	30kDa
形式	Liquid
保存条件	Store at -20°C. Avoid freeze / thaw cycles. Buffer: PBS with 0.75% BSA,50% glycerol,pH7.3.
偶联物	Unconjugated
阳性对照	SW480,22Rv1,MCF7,NCI-H460,SKOV3,Mouse kidney,Mouse liver,Mouse lung,Mouse testis
细胞定位	Cytoplasm
纯化	Affinity purification

抗原信息

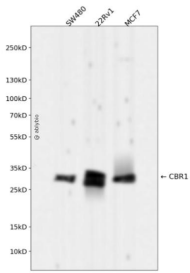
抗原信息	Recombinant fusion protein corresponding to Human CBR1.
序列	MSSGIHVALVTGGNKGIGLAIVRDLCLRFSGDVLTARDVTRGQAAVQQLQAEGLSPRFHQLDIDDLQSIRALRDFLRKEY GGLDVLVNNAGIAFKVADPTPFHQAQAEVTMKTNFFGTRDVCTELLPLIKPQGRVVNVSSIMSVRALKSCSPELQKFRSETI TEEELVGLMNKFVEDTKKGVHQKEGWSSAYGVTKIGVTVLSRIHARKLSEQRKGDKILLNACCPGWVRTDMAGPKATK SPEEGAETPVYLALLPPDAEGPHGQFVSEKRVEQW

靶点信息

研究背景	The protein encoded by this gene belongs to the short-chain dehydrogenases/reductases (SDR) family, which function as NADPH-dependent oxidoreductases having wide specificity for carbonyl compounds, such as quinones, prostaglandins, and various xenobiotics. Alternatively spliced transcript variants have been found for this gene.
------	---

基因ID	873
基因名	CBR1
Swiss	P16152
别名	CBR1;CBR;SDR21C1;hCBR1

产品验证



Western blot analysis of CBR1 expressed in SW480,22Rv1,MCF7 using CBR1 Rabbit mAb at 1:1000. Secondary antibody: HRP Goat Anti-Rabbit IgG (H+L) at 1:5000. Lysates/proteins: 30ug per lane. Blocking buffer: 5% non-fat dry milk in TBST. Detection: ECL Enhanced Kit. Exposure time: 120s.

实验步骤

访问官网浏览详情: www.ablybio.cn