

# Nesprin3 Rabbit mAb

货号: **AYM30272**

## 产品信息

反应	Human
宿主	Rabbit
克隆性	Monoclonal
预测反应	
应用	WB
推荐浓度	<b>WB:</b> 1:500 - 1:2000
理论分子量	68kDa/111kDa/112kDa
实测分子量	100kDa
形式	Liquid
保存条件	Store at -20°C. Avoid freeze / thaw cycles. Buffer: PBS with 0.75% BSA,50% glycerol,pH7.3.
偶联物	Unconjugated
阳性对照	HeLa,Jurkat,Mouse spleen
细胞定位	Nucleus envelope,Nucleus outer membrane,Rough endoplasmic reticulum,Single-pass type IV membrane protein
纯化	Affinity purification

## 抗原信息

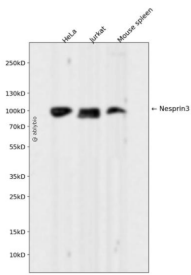
抗原信息	Recombinant fusion protein corresponding to Human Nesprin3.
序列	

## 靶点信息

研究背景	As a component of the LINC (LIinker of Nucleoskeleton and Cytoskeleton complex involved in the connection between the nuclear lamina and the cytoskeleton. The nucleocytoplasmic interactions established by the LINC complex play an important role in the transmission of mechanical forces across the nuclear envelope and in nuclear movement and positioning. Probable anchoring protein which tethers the nucleus to the cytoskeleton by binding PLEC which can associate with the intermediate filament system. Plays a role in the regulation of aortic epithelial cell morphology, and is required for flow-induced centrosome polarization and directional migration in aortic endothelial cells.
------	---

基因ID	161176
基因名	SYNE3
Swiss	Q6ZMZ3
别名	SYNE3;C14orf139;C14orf49;KASH3;LINC00341;NCRNA00341;NET53;Nespr3;nesprin-3

## 产品验证



Western blot analysis of Nesprin3 expressed in HeLa, Jurkat, Mouse spleen using Nesprin3 Rabbit mAb at 1:1000. Secondary antibody: HRP Goat Anti-Rabbit IgG (H+L) at 1:5000. Lysates/proteins: 30ug per lane. Blocking buffer: 5% non-fat dry milk in TBST. Detection: ECL Enhanced Kit. Exposure time: 120s.

## 实验步骤

访问官网浏览详情: [www.ablybio.cn](http://www.ablybio.cn)