

KLC1 Rabbit mAb

货号: **AYM30271**

产品信息

反应	Human,Mouse,Rat
宿主	Rabbit
克隆性	Monoclonal
预测反应	
应用	WB IHC IF/ICC IP FC
推荐浓度	WB: 1:500 - 1:2000 IHC: 1:50 - 1:200 IF/ICC: 1:50 - 1:200 IP: 1:20 - 1:50 FC: 1:20 - 1:50
理论分子量	62-72kDa
实测分子量	65kDa
形式	Liquid
保存条件	Store at -20°C. Avoid freeze / thaw cycles. Buffer: PBS with 0.75% BSA,50% glycerol,pH7.3.
偶联物	Unconjugated
阳性对照	SW480,22Rv1,BT-474,MCF7,Mouse brain
细胞定位	Cell projection,Cytoplasm,Cytoplasmic vesicle,cytoskeleton,growth cone
纯化	Affinity purification

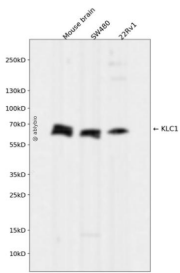
抗原信息

抗原信息	Recombinant fusion protein corresponding to Human KLC1.
序列	LALVYRDQNKYKDAANLLNDALAIREKTLGKDHPAVAATLNNLAVLYGKRKYKEAEPLCKRALEIREKVLGKDHPDVAKQ LNNLALLCQNQGKYEEVEYYYQRALEIYQTKLGPDDPNVAKTKNNLASCYLKQGKFKQAETLYKEILTRAHEREFGSVDDE NKPIWMHAEERECKGKQKDGTSFGEGGWYKACKVDSPTVTTTLKNLGALYRRQGGKFEAAETLEEAAMRSRKQGLDN VHKQRVAEVLNDPENMEKRRSRESLNVDVVKYESGPDGGEEVSMSEVWNGMRKMKLGLVN

靶点信息

研究背景	Conventional kinesin is a tetrameric molecule composed of two heavy chains and two light chains, and transports various cargos along microtubules toward their plus ends. The heavy chains provide the motor activity, while the light chains bind to various cargos. This gene encodes a member of the kinesin light chain family. It associates with kinesin heavy chain through an N-terminal domain, and six tetratricopeptide repeat (TPR) motifs are thought to be involved in binding of cargos such as vesicles, mitochondria, and the Golgi complex. Thus, kinesin light chains function as adapter molecules and not motors per se. Although previously named 'kinesin 2', this gene is not a member of the kinesin-2 / kinesin heavy chain subfamily of kinesin motor proteins. Extensive alternative splicing produces isoforms with different C-termini that are proposed to bind to different cargos; however, the full-length nature and/or biological validity of most of these variants have not been determined.
基因ID	3831
基因名	KLC1
Swiss	Q07866
别名	KLC1;KLC;KNS2;KNS2A

产品验证



Western blot analysis of KLC1 expressed in Mouse brain, SW480, 22Rv1 using KLC1 Rabbit mAb at 1:1000. Secondary antibody: HRP Goat Anti-Rabbit IgG (H+L) at 1:5000. Lysates/proteins: 30ug per lane. Blocking buffer: 5% non-fat dry milk in TBST. Detection: ECL Enhanced Kit. Exposure time: 120s.

实验步骤

访问官网浏览详情: www.ablybio.cn