

PCK2 Rabbit mAb

货号: **AYM30262**

产品信息

反应	Human,Mouse,Rat
宿主	Rabbit
克隆性	Monoclonal
预测反应	
应用	WB IHC IF/ICC FC
推荐浓度	WB: 1:500 - 1:2000 IHC: 1:50 - 1:200 IF/ICC: 1:50 - 1:200 FC: 1:20 - 1:50
理论分子量	71kDa
实测分子量	71kDa
形式	Liquid
保存条件	Store at -20°C. Avoid freeze / thaw cycles. Buffer: PBS with 0.75% BSA,50% glycerol,pH7.3.
偶联物	Unconjugated
阳性对照	HeLa,293T,HepG2,Mouse lung,Mouse brain,Mouse spleen,Rat kidney
细胞定位	Mitochondrion
纯化	Affinity purification

抗原信息

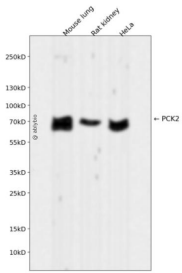
抗原信息	Recombinant fusion protein corresponding to Human PCK2.
序列	ENARVLDWICRRLEGEDSARETPIGLVPKEGALDLSGLRAIDTTQLFSLPKDFWEQEVDIRSYLTEQVNQDLPKEVLAELEALERRVHKM

靶点信息

研究背景	This gene encodes a mitochondrial enzyme that catalyzes the conversion of oxaloacetate to phosphoenol pyruvate in the presence of guanosine triphosphate (GTP). A cytosolic form of this protein is encoded by a different gene and is the key enzyme of gluconeogenesis in the liver. Alternatively spliced transcript variants have been described. [provided by RefSeq, Apr 2014]
------	--

基因ID	5106
基因名	PCK2
Swiss	Q16822
别名	PEPCK; PEPCK-M; PEPCK2

产品验证



Western blot analysis of PCK2 expressed in Mouse lung, Rat kidney, HeLa using PCK2 Rabbit mAb at 1:10 00. Secondary antibody: HRP Goat Anti-Rabbit IgG (H+L) at 1:5000. Lysates/proteins: 30ug per lane. Blocking buffer: 5% non-fat dry milk in TBST. Detection: ECL Enhanced Kit. Exposure time: 120s.

实验步骤

访问官网浏览详情: www.ablybio.cn