

NXF1 Rabbit mAb

货号: **AYM30256**

产品信息

反应	Human
宿主	Rabbit
克隆性	Monoclonal
预测反应	
应用	WB IHC IF/ICC IP
推荐浓度	WB: 1:500 - 1:2000 IHC: 1:50 - 1:200 IF/ICC: 1:50 - 1:200 IP: 1:20 - 1:50
理论分子量	40kDa/70kDa
实测分子量	70kDa
形式	Liquid
保存条件	Store at -20°C. Avoid freeze / thaw cycles. Buffer: PBS with 0.75% BSA,50% glycerol,pH7.3.
偶联物	Unconjugated
阳性对照	HeLa,293T,Mouse spleen,Mouse lung,Mouse kidney,Rat spleen,Rat lung,Rat brain
细胞定位	Cytoplasm,Nucleus,Nucleus speckle,nucleoplasm
纯化	Affinity purification

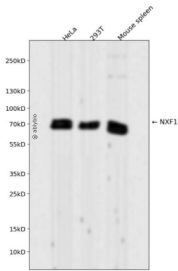
抗原信息

抗原信息	Recombinant fusion protein corresponding to Human NXF1.
序列	ILNELKPEQVEQLKLIMSKRYDGSQQALDLKGLRSDPDLVAQNIQVVLNRRSCMAATLRIIEENIPELLSLNLSNNRLYRLDD MSSIVQKAPNLKILNLSG

靶点信息

研究背景	This gene is one member of a family of nuclear RNA export factor genes. Common domain features of this family are a noncanonical RNP-type RNA-binding domain (RBD), 4 leucine-rich repeats (LRRs), a nuclear transport factor 2 (NTF2)-like domain that allows heterodimerization with NTF2-related export protein-1 (NXT1), and a ubiquitin-associated domain that mediates interactions with nucleoporins. The LRRs and NTF2-like domains are required for export activity. Alternative splicing seems to be a common mechanism in this gene family. The encoded protein of this gene shuttles between the nucleus and the cytoplasm and binds in vivo to poly(A) ⁺ RNA. It is the vertebrate homologue of the yeast protein Mex67p. The encoded protein overcomes the mRNA export block caused by the presence of saturating amounts of CTE (constitutive transport element) RNA of type D retroviruses. Alternative splicing results in multiple transcript variants.
基因ID	10482
基因名	NXF1
Swiss	Q9UBU9
别名	NXF1;MEX67;TAP

产品验证



Western blot analysis of NXF1 expressed in HeLa, 293T, Mouse spleen using NXF1 Rabbit mAb at 1:1000. Secondary antibody: HRP Goat Anti-Rabbit IgG (H+L) at 1:5000. Lysates/proteins: 30ug per lane. Blocking buffer: 5% non-fat dry milk in TBST. Detection: ECL Enhanced Kit. Exposure time: 120s.

实验步骤

访问官网浏览详情: www.ablybio.cn