

# Lysozyme Rabbit mAb

货号: **AYM30246**

## 产品信息

反应	Human,Mouse
宿主	Rabbit
克隆性	Monoclonal
预测反应	
应用	<a href="#">WB</a> <a href="#">IHC</a> <a href="#">ICC</a> <a href="#">IP</a>
推荐浓度	<b>WB:</b> 1:500 - 1:2000 <b>IHC:</b> 1:50 - 1:200 <b>ICC:</b> 1:50 - 1:200 <b>IP:</b> 1:20 - 1:50
理论分子量	17kDa
实测分子量	17kDa
形式	Liquid
保存条件	Store at -20°C. Avoid freeze / thaw cycles. Buffer: PBS with 0.75% BSA,50% glycerol,pH7.3.
偶联物	Unconjugated
阳性对照	HepG2,RAW264.7,THP-1,U-937,Mouse lung
细胞定位	Secreted
纯化	Affinity purification

## 抗原信息

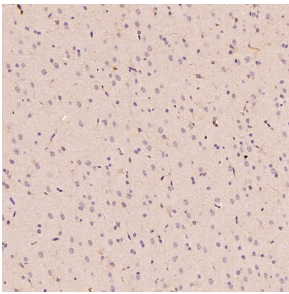
抗原信息	Recombinant fusion protein corresponding to Human Lysozyme .
序列	MKALIVLGLVLLSVTVQGKVFERCELARTLKR LGMDGYRGISLANWMCLAKWESGYNTRATNYAGDRSTDY GIFQINSR YWCNDGKTPGAVNACHLSCS

## 靶点信息

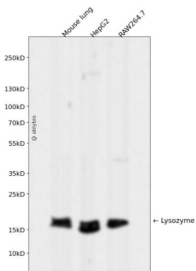
研究背景	This gene encodes human lysozyme, whose natural substrate is the bacterial cell wall peptidoglycan (cleaving the beta[1-4]glycosidic linkages between N-acetylmuramic acid and N-acetylglucosamine). Lysozyme is one of the antimicrobial agents found in human milk, and is also present in spleen, lung, kidney, white blood cells, plasma, saliva, and tears. The protein has antibacterial activity against a number of bacterial species. Missense mutations in this gene have been identified in heritable renal amyloidosis. [provided by RefSeq, Oct 2014]
------	--

基因ID	4069
基因名	LYZ
Swiss	P61626
别名	LYZF1; LZM

## 产品验证



Immunohistochemical analysis of paraffin-embedded Rat cerebral cortex, using the Antibody at 1:2000 dilution.



Western blot analysis of Lysozyme expressed in Mouse lung, HepG2, RAW264.7 using Lysozyme Rabbit mAb at 1:1000. Secondary antibody: HRP Goat Anti-Rabbit IgG (H+L) at 1:5000. Lysates /proteins: 30ug per lane. Blocking buffer: 5% non-fat dry milk in TBST. Detection: ECL Enhanced Kit. Exposure time: 120s.

## 实验步骤

访问官网浏览详情: [www.ablybio.cn](http://www.ablybio.cn)