

SAMM50 Rabbit mAb

货号: **AYM30245**

产品信息

反应	Human
宿主	Rabbit
克隆性	Monoclonal
预测反应	
应用	WB IHC
推荐浓度	WB: 1:500 - 1:2000 IHC: 1:50 - 1:200
理论分子量	52kDa
实测分子量	52kDa
形式	Liquid
保存条件	Store at -20°C. Avoid freeze / thaw cycles. Buffer: PBS with 0.75% BSA, 50% glycerol, pH7.3.
偶联物	Unconjugated
阳性对照	293T, HepG2, RD, Mouse heart, Mouse skeletal muscle, Rat heart, Rat pancreas
细胞定位	Cytoplasm, Mitochondrion, Mitochondrion outer membrane, Multi-pass membrane protein
纯化	Affinity purification

抗原信息

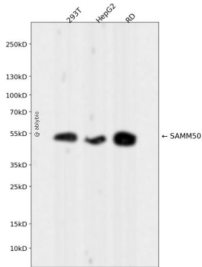
抗原信息	Recombinant fusion protein corresponding to Human SAMM50.
序列	FELQLNKQLIFDSVFSASFWGGMLVPIGDKPSSIADRFYLGGPTSIRGFSMHSIGPQSEGDYLGGEAYWAGGLHLYTPLPF RPGQGGFGELFRTHFFLNAG

靶点信息

研究背景	This gene encodes a component of the Sorting and Assembly Machinery (SAM) of the mitochondrial outer membrane. The Sam complex functions in the assembly of beta-barrel proteins into the outer mitochondrial membrane.
基因ID	25813

基因名	SAMM50
Swiss	Q9Y512
别名	SAMM50; CGI-51; OMP85; SAM50; TOB55; TRG-3; YNL026W; SAMM50 sorting and assembly machinery component

产品验证



Western blot analysis of SAMM50 expressed in 293T, HepG2, RD using SAMM50 Rabbit mAb at 1:1000. Secondary antibody: HRP Goat Anti-Rabbit IgG (H+L) at 1:5000. Lysates/proteins: 30ug per lane. Blocking buffer: 5% non-fat dry milk in TBST. Detection: ECL Enhanced Kit. Exposure time: 120s.

实验步骤

访问官网浏览详情: www.ablybio.cn