

# CaMKII alpha Rabbit mAb

货号: **AYM30233**

## 产品信息

反应	Human,Mouse,Rat
宿主	Rabbit
克隆性	Monoclonal
预测反应	
应用	WB IP FC
推荐浓度	<b>WB:</b> 1:500 - 1:2000 <b>IP:</b> 1:20 - 1:50 <b>FC:</b> 1:20 - 1:50
理论分子量	22kDa/54kDa
实测分子量	54kDa
形式	Liquid
保存条件	Store at -20°C. Avoid freeze / thaw cycles. Buffer: PBS with 0.75% BSA,50% glycerol,pH7.3.
偶联物	Unconjugated
阳性对照	Mouse brain
细胞定位	Cell junction,presynaptic cell membrane,synapse
纯化	Affinity purification

## 抗原信息

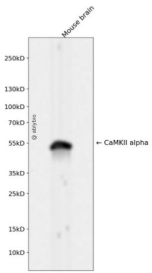
抗原信息	Recombinant fusion protein corresponding to Human CaMKII alpha.
序列	QETVD

## 靶点信息

研究背景	The product of this gene belongs to the serine/threonine protein kinases family, and to the Ca(2+)/calmodulin-dependent protein kinases subfamily. Calcium signaling is crucial for several aspects of plasticity at glutamatergic synapses. This calcium calmodulin-dependent protein kinase is composed of four different chains: alpha, beta, gamma, and delta. The alpha chain encoded by this gene is required for hippocampal long-term potentiation (LTP) and spatial learning. In addition to its calcium-calmodulin (CaM)-dependent activity, this protein can undergo autophosphorylation, resulting in CaM-independent activity. Two transcript variants encoding distinct isoforms have been identified for this gene.
------	--

基因ID	815
基因名	CAMK2A
Swiss	Q9UQM7
别名	CAMK2A;CAMKA

## 产品验证



Western blot analysis of CaMKII alpha expressed in Mouse brain using CaMKII alpha Rabbit mAb at 1:1000. Secondary antibody: HRP Goat Anti-Rabbit IgG (H+L) at 1:5000. Lysates/proteins: 30ug per lane. Blocking buffer: 5% non-fat dry milk in TBST. Detection: ECL Enhanced Kit. Exposure time: 120s.

## 实验步骤

访问官网浏览详情: [www.ablybio.cn](http://www.ablybio.cn)