

# gamma Synuclein Rabbit mAb

货号: **AYM30230**

## 产品信息

反应	Human,Rat
宿主	Rabbit
克隆性	Monoclonal
预测反应	
应用	WB IHC ICC IP FC
推荐浓度	<b>WB:</b> 1:500 - 1:2000 <b>IHC:</b> 1:50 - 1:200 <b>ICC:</b> 1:50 - 1:200 <b>IP:</b> 1:20 - 1:50 <b>FC:</b> 1:20 - 1:50
理论分子量	13kDa
实测分子量	16kDa
形式	Liquid
保存条件	Store at -20°C. Avoid freeze / thaw cycles. Buffer: PBS with 0.75% BSA,50% glycerol,pH7.3.
偶联物	Unconjugated
阳性对照	HT-29,Mouse brain
细胞定位	Cytoplasm,centrosome,cytoskeleton,microtubule organizing center,perinuclear region,spindle
纯化	Affinity purification

## 抗原信息

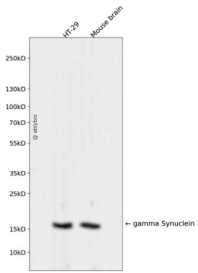
抗原信息	Recombinant fusion protein corresponding to Human gamma Synuclein .
序列	MDVFKKGFSAIAGEVVGAVEKTKQGVTEAAEKTKEGVMYVGAKTKENVVQSVTSVAEKTKEQANAVSEAVVSSVNTVAT KTVEEAENIAVTSGVVRKEDLRPSAPQQEGEASKEEVEAAEQSGGD

## 靶点信息

研究背景	This gene encodes a member of the synuclein family of proteins which are believed to be involved in the pathogenesis of neurodegenerative diseases. Mutations in this gene have also been associated with breast tumor development.
------	---

基因ID	6623
基因名	SNCG
Swiss	O76070
别名	SNCG;BCSG1;SR

## 产品验证



Western blot analysis of gamma Synuclein expressed in HT-29, Mouse brain using gamma Synuclein Rabbit mAb at 1:1000. Secondary antibody: HRP Goat Anti-Rabbit IgG (H+L) at 1:5000. Lysates/proteins: 30ug per lane. Blocking buffer: 5% non-fat dry milk in TBST. Detection: ECL Enhanced Kit. Exposure time: 120s.

## 实验步骤

访问官网浏览详情: [www.ablybio.cn](http://www.ablybio.cn)