

CLPTM1 Rabbit mAb

货号: **AYM30226**

产品信息

反应	Human
宿主	Rabbit
克隆性	Monoclonal
预测反应	
应用	WB IHC IF/ICC FC
推荐浓度	WB: 1:500 - 1:2000 IHC: 1:50 - 1:200 IF/ICC: 1:50 - 1:200 FC: 1:20 - 1:50
理论分子量	65kDa/75kDa/76kDa
实测分子量	90kDa
形式	Liquid
保存条件	Store at -20°C. Avoid freeze / thaw cycles. Buffer: PBS with 0.75% BSA,50% glycerol,pH7.3.
偶联物	Unconjugated
阳性对照	Mouse kidney,Mouse brain,Rat brain
细胞定位	Membrane,Multi-pass membrane protein
纯化	Affinity purification

抗原信息

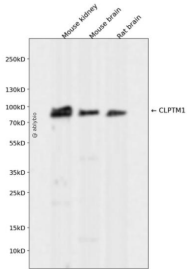
抗原信息	Recombinant fusion protein corresponding to Human CLPTM1.
序列	MAAAQEADGARS AVVAAGGGSSGQVTSNGSIGRDPPEAQPNPPAQPNNAWQVIKGVLFRIIWAISSWFRRGPAP QDQAGPGGAPRVASRNLFPKDTLMNLHVYISEHEHFTDFNATSALFWEQHDLVYGDWTSGENSDGCEYHFAELDIPQS VQQNGSIYIHVYFTKSGFHPDPRQKALYRRLATVHMMSRMINKYKRRRFQKTKNLLTGETEADPEMIKRAEDYGPVEVISHW HPNITINIVDDHTPWVKGSVPPPLDQYVKFDAVSGDYPIIY

靶点信息

研究背景	May play a role in T-cell development.
基因ID	1209

基因名	CLPTM1
Swiss	O96005
别名	CLPTM1

产品验证



Western blot analysis of CLPTM1 expressed in Mouse kidney, Mouse brain, Rat brain using CLPTM1 Rabbit mAb at 1:1000. Secondary antibody: HRP Goat Anti-Rabbit IgG (H+L) at 1:5000. Lysates/proteins: 30ug per lane. Blocking buffer: 5% non-fat dry milk in TBST. Detection: ECL Enhanced Kit. Exposure time: 120s.

实验步骤

访问官网浏览详情: www.ablybio.cn