

# Hemopexin Rabbit mAb

货号: **AYM30223**

## 产品信息

反应	Human
宿主	Rabbit
克隆性	Monoclonal
预测反应	
应用	WB IHC IF/ICC IP
推荐浓度	<b>WB:</b> 1:500 - 1:2000 <b>IHC:</b> 1:50 - 1:200 <b>IF/ICC:</b> 1:50 - 1:200 <b>IP:</b> 1:20 - 1:50
理论分子量	51kDa
实测分子量	70-75kDa
形式	Liquid
保存条件	Store at -20°C. Avoid freeze / thaw cycles. Buffer: PBS with 0.75% BSA, 50% glycerol, pH7.3.
偶联物	Unconjugated
阳性对照	HL-60, HepG2, BT-474, Mouse liver, Mouse pancreas
细胞定位	Secreted
纯化	Affinity purification

## 抗原信息

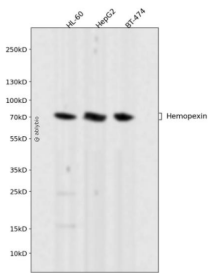
抗原信息	Recombinant fusion protein corresponding to Human Hemopexin.
序列	TPLPPTSAHGNVAEGETKPDVDTERCSDGWSFDATTLLDDNGTMLFFKGEFVWKSHKWDRELISERWKNFSPVDAAF RQGHNSVFLIKGDKVWVYPPEKKEKGYPKLLQDEFPGPSPLDAAVECHRGECAEGVLFQGDREWFWDLATGTMKER SWPAVGNCSALRWLGRIYCFQGNQFLRFDPVRGEVPPRYPRDVRDYFMPCPRGRGHGHRNGTGHG

## 靶点信息

研究背景	This gene encodes a plasma glycoprotein that binds heme with high affinity. The encoded protein is an acute phase protein that transports heme from the plasma to the liver and may be involved in protecting cells from oxidative stress.
------	--

基因ID	3263
基因名	HPX
Swiss	P02790
别名	HPX;HX;hemopexin

## 产品验证



Western blot analysis of Hemopexin expressed in HL-60,HepG2,BT-474 using Hemopexin Rabbit mAb at 1:1000. Secondary antibody: HRP Goat Anti-Rabbit IgG (H+L) at 1:5000. Lysates/proteins: 30ug per lane. Blocking buffer: 5% non-fat dry milk in TBST. Detection: ECL Enhanced Kit. Exposure time: 120 S.

## 实验步骤

访问官网浏览详情: [www.ablybio.cn](http://www.ablybio.cn)