

# AP2S1 Rabbit mAb

货号: **AYM30222**

## 产品信息

反应	Human,Mouse,Rat
宿主	Rabbit
克隆性	Monoclonal
预测反应	
应用	WB IP FC
推荐浓度	<b>WB:</b> 1:500 - 1:2000 <b>IP:</b> 1:20 - 1:50 <b>FC:</b> 1:20 - 1:50
理论分子量	12kDa/17kDa
实测分子量	17kDa
形式	Liquid
保存条件	Store at -20°C. Avoid freeze / thaw cycles. Buffer: PBS with 0.75% BSA,50% glycerol,pH7.3.
偶联物	Unconjugated
阳性对照	HeLa,LO2,SH-SY5Y,Mouse brain,Mouse kidney,Mouse spleen,Rat brain,Rat spleen
细胞定位	Cell membrane,Cytoplasmic side,Membrane,Peripheral membrane protein,coated pit
纯化	Affinity purification

## 抗原信息

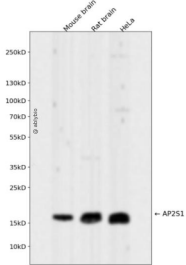
抗原信息	Recombinant fusion protein corresponding to Human AP2S1.
序列	MIRFILIQNRAGKTRLAKWYMQFDDDEKQKLIIEVHAVVTVRDAKHTNFVEFRNFKIIYRRYAGLYFCICVDVNDNNLAYLEA IHNFVEVLNEYFHNVCELDLVFNFKYVYTVVDEMFLAGEIRETSQTKVLKQLLMLQSLE

## 靶点信息

研究背景	One of two major clathrin-associated adaptor complexes, AP-2, is a heterotetramer which is associated with the plasma membrane. This complex is composed of two large chains, a medium chain, and a small chain. This gene encodes the small chain of this complex. Alternative splicing results in multiple transcript variants.
基因ID	1175

基因名	AP2S1
Swiss	P53680
别名	AP2S1;AP17;CLAPS2;FBH3;FBHOk;HHC3

## 产品验证



Western blot analysis of AP2S1 expressed in Mouse brain,Rat brain,HeLa using AP2S1 Rabbit mAb at 1:1000. Secondary antibody: HRP Goat Anti-Rabbit IgG (H+L) at 1:5000. Lysates/proteins: 30ug per lane. Blocking buffer: 5% non-fat dry milk in TBST. Detection: ECL Enhanced Kit. Exposure time: 120s.

## 实验步骤

访问官网浏览详情: [www.ablybio.cn](http://www.ablybio.cn)