

Mast Cell Tryptase Rabbit mAb

货号: AYM30215

产品信息

反应	Human,Mouse,Rat
宿主	Rabbit
克隆性	Monoclonal
预测反应	
应用	WB IHC IP
推荐浓度	WB: 1:500 - 1:2000 IHC: 1:50 - 1:200 IP: 1:20 - 1:50
理论分子量	30kDa
实测分子量	30kDa
形式	Liquid
保存条件	Store at -20°C. Avoid freeze / thaw cycles. Buffer: PBS with 0.75% BSA,50% glycerol,pH7.3.
偶联物	Unconjugated
阳性对照	Mouse skin,Rat skin
细胞定位	extracellular space
纯化	Affinity purification

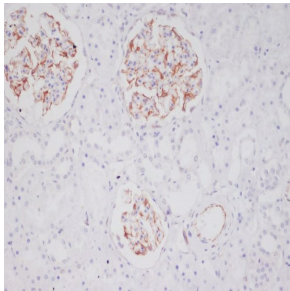
抗原信息

抗原信息	Recombinant fusion protein corresponding to Human Mast Cell Tryptase.
序列	GIVGGQEAPRSKWPWQVSLRVHGPYWMHFCGGSLIHPQWVLTAAHCVGPDKDLAALRVQLREQHLYYQDQLLPVSRILVHPQFYTAQIGADIALLELEEPVNVSSHVHTVTLPPASETFFPGMPCWVTGWGDVDNDERLPPPFPLKQVKVPIMENCHIDAKYHLGAYTGDDVRIVRDDMLCAGNTRRDSCQGDSSGGPLVCKVNGTWLQAGVVSWSGEGCAQPNRPGIYTRVTTYLDWIHHYVKKP

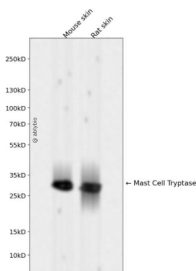
靶点信息

研究背景	Tryptases comprise a family of trypsin-like serine proteases, the peptidase family S1. Tryptases are enzymatically active only as heparin-stabilized tetramers, and they are resistant to all known endogenous protease inhibitors. Several tryptase genes are clustered on chromosome 16p13.3. These genes are characterized by several distinct features. They have a highly conserved 3' UTR and contain tandem repeat sequences at the 5' flank and 3' UTR which are thought to play a role in regulation of the mRNA stability. These genes have an intron immediately upstream of the initiator Met codon, which separates the site of transcription initiation from protein coding sequence. This feature is characteristic of tryptases but is unusual in other genes. The alleles of this gene exhibit an unusual amount of sequence variation, such that the alleles were once thought to represent two separate genes, beta II and beta III. Beta tryptases appear to be the main isoenzymes expressed in mast cells, whereas in basophils, alpha-tryptases predominate. Tryptases have been implicated as mediators in the pathogenesis of asthma and other allergic and inflammatory disorders. [provided by RefSeq, Jul 2008]
基因ID	64499
基因名	
Swiss	P20231
别名	TPS2; tryptaseB; tryptaseC

产品验证



Immunohistochemical analysis of paraffin-embedded human kidney, using Mast Cell Tryptase A antibody.



Western blot analysis of Mast Cell Tryptase expressed in Mouse skin, Rat skin using Mast Cell Tryptase Rabbit mAb at 1:1000. Secondary antibody: HRP Goat Anti-Rabbit IgG (H+L) at 1:5000. Lysates/proteins: 30ug per lane. Blocking buffer: 5% non-fat dry milk in TBST. Detection: ECL Enhanced Kit. Exposure time: 120s.

实验步骤

访问官网浏览详情: www.ablybio.cn