

# Bovine Serum Albumin Rabbit mAb

货号: **AYM30212**

## 产品信息

反应	Human,Mouse,Rat,Cow
宿主	Rabbit
克隆性	Monoclonal
预测反应	
应用	WB IHC
推荐浓度	<b>WB:</b> 1:500 - 1:2000 <b>IHC:</b> 1:50 - 1:200
理论分子量	45kDa/47kDa/69kDa
实测分子量	69kDa
形式	Liquid
保存条件	Store at -20°C. Avoid freeze / thaw cycles. Buffer: PBS with 0.75% BSA,50% glycerol,pH7.3.
偶联物	Unconjugated
阳性对照	HepG2,HeLa(Negative control),Mouse liver,Mouse lung,Rat liver
细胞定位	Secreted
纯化	Affinity purification

## 抗原信息

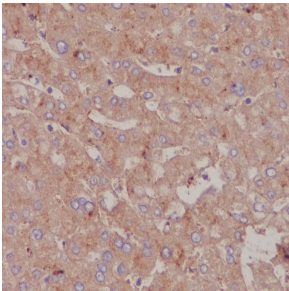
抗原信息	Recombinant fusion protein corresponding to Human Bovine Serum Albumin.
序列	GVFRRDAHKSEVAHRFKDLGEENFKALVLIIFAQYLQCPFEDHVKLVNEVTEFAKTCVADESAENCDKSLHTLFGDKLCT VATLRETYGEMADCCAQEPERNECFLQHKDDNPNLPRVLRPEVDVMCTAFHDNEETFLKKYLYEIARRHPYFYAPELLFFA KRYKAAFTCCQAADKAAACLLPKLDELRLDEGKASSAQRLKCASLQKFGERAFKAWAVARLSQRFPAEFAEV

## 靶点信息

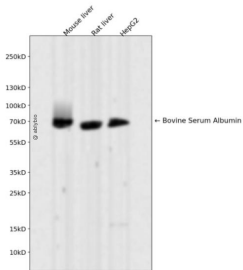
研究背景	Albumin is a soluble, monomeric protein which comprises about one-half of the blood serum protein. Albumin functions primarily as a carrier protein for steroids, fatty acids, and thyroid hormones and plays a role in stabilizing extracellular fluid volume. Albumin is a globular unglycosylated serum protein of molecular weight 65,000. Albumin is synthesized in the liver as prealbumin which has an N-terminal peptide that is removed before the nascent protein is released from the rough endoplasmic reticulum. The product, prealbumin, is in turn cleaved in the Golgi vesicles to produce the secreted albumin.
------	--

基因ID	213
基因名	ALB
Swiss	P02768
别名	ALB;HSA;PRO0883;PRO0903;PRO1341;albumin;Albumin

## 产品验证



Immunohistochemical analysis of paraffin-embedded human liver, using Serum Albumin Antibody.



Western blot analysis of Bovine Serum Albumin expressed in Mouse liver, Rat liver, HepG2 using Bovine Serum Albumin Rabbit mAb at 1:1000. Secondary antibody: HRP Goat Anti-Rabbit IgG (H+L) at 1:5000. Lysates/proteins: 30ug per lane. Blocking buffer: 5% non-fat dry milk in TBST. Detection: ECL Enhanced Kit. Exposure time: 120s.

## 实验步骤

访问官网浏览详情: [www.ablybio.cn](http://www.ablybio.cn)