

CAPG Rabbit mAb

货号: **AYM30211**

产品信息

反应	Human,Mouse,Rat
宿主	Rabbit
克隆性	Monoclonal
预测反应	
应用	WB
推荐浓度	WB: 1:500 - 1:2000
理论分子量	38kDa
实测分子量	38kDa
形式	Liquid
保存条件	Store at -20°C. Avoid freeze / thaw cycles. Buffer: PBS with 0.75% BSA,50% glycerol,pH7.3.
偶联物	Unconjugated
阳性对照	HeLa,Mouse lung,Mouse spleen,Mouse kidney,Rat lung
细胞定位	actin cytoskeleton,centriole,cytoplasm,extracellular exosome,extracellular space,melanosome,mitotic spindle,nucleolus,nucleoplasm,nucleus
纯化	Affinity purification

抗原信息

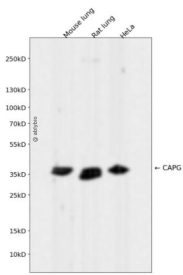
抗原信息	Recombinant fusion protein corresponding to Human CAPG.
序列	MYTAIPQSGSPFPGSVQDPGLHVWRVEKLPVPVAQENQGVFFSGDSYLVLHNGPEEVSHLHLWIGQQSSRDEQGACAVLAVHLNLTLLGERPVQHREVQGNESDLFMSYFPRGLKYQEGGVESAFHKTSTGAPAAIKLYQVKGKKNIRATERALNWD SFNTGDCFILDGQNIFAWCGGKSNILERN

靶点信息

研究背景	This gene encodes a member of the gelsolin/villin family of actin-regulatory proteins. The encoded protein reversibly blocks the barbed ends of F-actin filaments in a Ca ²⁺ and phosphoinositide-regulated manner, but does not sever preformed actin filaments. By capping the barbed ends of actin filaments, the encoded protein contributes to the control of actin-based motility in non-muscle cells. Alternatively spliced transcript variants have been observed for this gene. [provided by RefSeq, Jan 2012]
------	--

基因ID	822
基因名	CAPG
Swiss	P40121
别名	AFCP; HEL-S-66; MCP

产品验证



Western blot analysis of CAPG expressed in Mouse lung,Rat lung,HeLa using CAPG Rabbit mAb at 1:1000. Secondary antibody: HRP Goat Anti-Rabbit IgG (H+L) at 1:5000. Lysates/proteins: 30ug per lane. Blocking buffer: 5% non-fat dry milk in TBST. Detection: ECL Enhanced Kit. Exposure time: 120s.

实验步骤

访问官网浏览详情: www.ablybio.cn