

Cathepsin S Rabbit mAb

货号: **AYM30200**

产品信息

反应	Human
宿主	Rabbit
克隆性	Monoclonal
预测反应	
应用	WB IHC IF/ICC
推荐浓度	WB: 1:500 - 1:2000 IHC: 1:50 - 1:200 IF/ICC: 1:50 - 1:200
理论分子量	31kDa/37kDa
实测分子量	25kDa
形式	Liquid
保存条件	Store at -20°C. Avoid freeze / thaw cycles. Buffer: PBS with 0.75% BSA,50% glycerol,pH7.3.
偶联物	Unconjugated
阳性对照	THP-1,HL-60,HepG2,Mouse liver,Rat brain
细胞定位	Lysosome
纯化	Affinity purification

抗原信息

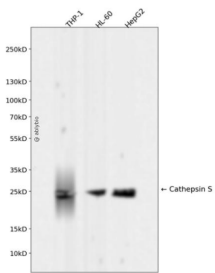
抗原信息	Recombinant fusion protein corresponding to Human Cathepsin S.
序列	LPDSVDWREKGCVTEVKYQGSCGACWAFSAVGALEAQLKLTGKLVLSAQNLVDCSTEKYGNKGCNNGGFMTTAFQYII DNKGI DSDASYPYKAMDQKQCQYDSKYRAATCSKYTELPYGREVDLKEAVANKGPVSVGVDARHPSFFLYRSGVYYEPSC TQNVNHGVLVVGYGDLNGKEYWLKNSWGHNFGEEGYIRMARNKGNHCGIASFPYPEI

靶点信息

研究背景	The protein encoded by this gene, a member of the peptidase C1 family, is a lysosomal cysteine proteinase that may participate in the degradation of antigenic proteins to peptides for presentation on MHC class II molecules. The encoded protein can function as an elastase over a broad pH range in alveolar macrophages. Alternatively spliced transcript variants encoding distinct isoforms have been found for this gene.
------	--

基因ID	1520
基因名	CTSS
Swiss	P25774
别名	CTSS

产品验证



Western blot analysis of Cathepsin S expressed in THP-1,HL-60,HepG2 using Cathepsin S Rabbit mAb at 1:1000. Secondary antibody: HRP Goat Anti-Rabbit IgG (H+L) at 1:5000. Lysates/proteins: 30ug per lane. Blocking buffer: 5% non-fat dry milk in TBST. Detection: ECL Enhanced Kit. Exposure time: 1 20s.

实验步骤

访问官网浏览详情: www.ablybio.cn