

MHC Class II Rabbit mAb

货号: **AYM30199**

产品信息

反应	Human
宿主	Rabbit
克隆性	Monoclonal
预测反应	
应用	WB IHC IF/ICC IP
推荐浓度	WB: 1:500 - 1:2000 IHC: 1:50 - 1:200 IF/ICC: 1:50 - 1:200 IP: 1:20 - 1:50
理论分子量	29kDa
实测分子量	29kDa
形式	Liquid
保存条件	Store at -20°C. Avoid freeze / thaw cycles. Buffer: PBS with 0.75% BSA,50% glycerol,pH7.3.
偶联物	Unconjugated
阳性对照	Raji,HeLa (negative)
细胞定位	Cell membrane,Endoplasmic reticulum membrane,Endosome membrane,Golgi apparatus,Lysosome membrane,Single-pass type I membrane protein,trans-Golgi network membrane
纯化	Affinity purification

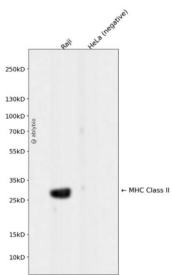
抗原信息

抗原信息	Recombinant fusion protein corresponding to Human MHC Class II.
序列	RATPENYLFQGRQECYAFNGTQRFLERYIYNREEFARFSDVGEFRAVTELGRPAAEYWNSQKDILEEKRAVPDRMCRHN YELGGPMTLQRRVQPRVNVSPSKKGPLQHNNLLVCHVTDFYPGSIQVRWFLNGQEETAGVVSTNLRNGDWTFQILVML EMTPQQGDVYTCQVEHTSLDSPVTVEWKAQSDSARSK

靶点信息

研究背景	HLA-DPB belongs to the HLA class II beta chain paralogues. This class II molecule is a heterodimer consisting of an alpha (DPA) and a beta chain (DPB), both anchored in the membrane. It plays a central role in the immune system by presenting peptides derived from extracellular proteins. Class II molecules are expressed in antigen presenting cells (APC: B lymphocytes, dendritic cells, macrophages). The beta chain is approximately 26-28 kDa and its gene contains 6 exons. Exon one encodes the leader peptide, exons 2 and 3 encode the two extracellular domains, exon 4 encodes the transmembrane domain and exon 5 encodes the cytoplasmic tail. Within the DP molecule both the alpha chain and the beta chain contain the polymorphisms specifying the peptide binding specificities, resulting in up to 4 different molecules.
基因ID	3115
基因名	HLA-DPB1
Swiss	P04440
别名	DPB1;HLA-DP;HLA-DP1B;HLA-DPB;HLA-DPB1;major histocompatibility complex;class II;DP beta 1

产品验证



Western blot analysis of MHC Class II expressed in Raji, HeLa (negative) using MHC Class II Rabbit mAb at 1:1000. Secondary antibody: HRP Goat Anti-Rabbit IgG (H+L) at 1:5000. Lysates/proteins: 30ug per lane. Blocking buffer: 5% non-fat dry milk in TBST. Detection: ECL Enhanced Kit. Exposure time: 120s.

实验步骤

访问官网浏览详情: www.ablybio.cn