

Phospho-Glycogen synthase 1 (S641) Rabbit mAb

货号: **AYM30193**

产品信息

反应	Human,Mouse
宿主	Rabbit
克隆性	Monoclonal
预测反应	
应用	WB IHC ICC IP
推荐浓度	WB: 1:500 - 1:2000 IHC: 1:50 - 1:200 ICC: 1:50 - 1:200 IP: 1:20 - 1:50
理论分子量	76kDa/83kDa
实测分子量	85kDa
形式	Liquid
保存条件	Store at -20°C. Avoid freeze / thaw cycles. Buffer: PBS with 0.75% BSA,50% glycerol,pH7.3.
偶联物	Unconjugated
阳性对照	HeLa,293T,BT-474,Mouse heart
细胞定位	cytoplasm,cytosol
纯化	Affinity purification

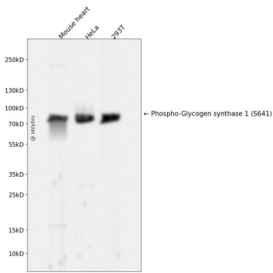
抗原信息

抗原信息	Recombinant fusion protein corresponding to Human Phospho-Glycogen synthase 1 (S641).
序列	LLPVDYEEFVRGCHLGVFSPYYEPWGYTPAECTVMGIPSISTNLSGFGCFMEEHIADPSAYGIYILDRRFRSLDDSCSQLTSF LYSFCQQSRRQRRIIQNRNTERLSDLLDWKYLGRYYMSARHMALSKAFPEHFTYEPNEADAAQGYRYPASVPPSPSLSRH SSPHQSEDEEDPRNGPLEEDGERYDEDEEAAKDRRNIRAPEWPRRASCTSSSTSGSKRNSVDTATSSSLSTPSEPLSPTSS LGEERN

靶点信息

研究背景	The protein encoded by this gene catalyzes the addition of glucose monomers to the growing glycogen molecule through the formation of alpha-1,4-glycoside linkages. Mutations in this gene are associated with muscle glycogen storage disease. Alternatively spliced transcript variants encoding different isoforms have been found for this gene.
基因ID	2997
基因名	GYS1
Swiss	P13807
别名	GYS1;GSY;GYS

产品验证



Western blot analysis of Phospho-Glycogen synthase 1 (S641) expressed in Mouse heart, HeLa, 293T using Phospho-Glycogen synthase 1 (S641) Rabbit mAb at 1:1000. Secondary antibody: HRP Goat Anti-Rabbit IgG (H+L) at 1:5000. Lysates/proteins: 30ug per lane. Blocking buffer: 5% non-fat dry milk in TBST. Detection: ECL Enhanced Kit. Exposure time: 120s.

实验步骤

访问官网浏览详情: www.ablybio.cn