

Lamin B2 Rabbit mAb

货号: **AYM30190**

产品信息

反应	Human,Mouse,Rat
宿主	Rabbit
克隆性	Monoclonal
预测反应	
应用	WB IHC IF/ICC IP FC
推荐浓度	WB: 1:500 - 1:2000 IHC: 1:50 - 1:200 IF/ICC: 1:50 - 1:200 IP: 1:20 - 1:50 FC: 1:20 - 1:50
理论分子量	69kDa
实测分子量	68kDa
形式	Liquid
保存条件	Store at -20°C. Avoid freeze / thaw cycles. Buffer: PBS with 0.75% BSA,50% glycerol,pH7.3.
偶联物	Unconjugated
阳性对照	293T,HepG2,MCF7,SW620,Mouse liver,Mouse heart
细胞定位	Lipid-anchor,Nucleoplasmic side,Nucleus inner membrane
纯化	Affinity purification

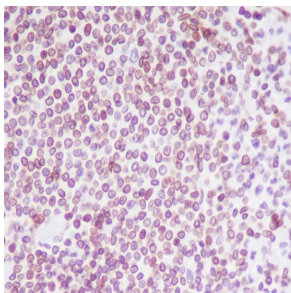
抗原信息

抗原信息	Recombinant fusion protein corresponding to Human Lamin B2 .
序列	AMAGERDKFRKMLDAKEQEMTEMRDVMQQQLAEYQELLDVKLALDMEINAYRKLLEGEERLKLSPSPSSRVTVSRATSS SSGSLSATGRLGRSKRKRLEVEEPLGSGPSVLGTGTGGSGGFHLAQQASASGSVSIEEIDLEGKFVQLKNNSDKDQSLG NWRIKRQVLEGEIAYKFTPKYILRAGQMVTVWAAGAGVAHSPSTLVWKGQSSWGTGESFRVTLVNADGEEVAMRTVK KSSVMRENENGEEEEAEFGEDLFHQQGDPRTTSSRGCYVM

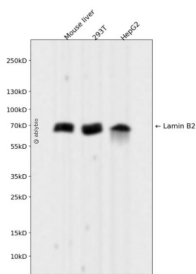
靶点信息

研究背景	This gene encodes a B type nuclear lamin. The nuclear lamina consists of a two-dimensional matrix of proteins located next to the inner nuclear membrane. The lamin family of proteins make up the matrix and are highly conserved in evolution. During mitosis, the lamina matrix is reversibly disassembled as the lamin proteins are phosphorylated. Lamin proteins are thought to be involved in nuclear stability, chromatin structure and gene expression. Vertebrate lamins consist of two types, A and B. Mutations in this gene are associated with acquired partial lipodystrophy.
基因ID	84823
基因名	LMNB2
Swiss	Q03252
别名	LMNB2;EPM9;LAMB2;LMN2;lamin-B2

产品验证



Immunohistochemical analysis of paraffin-embedded human spleen, using Lamin B2 Antibody.



Western blot analysis of Lamin B2 expressed in Mouse liver, 293T, HepG2 using Lamin B2 Rabbit mAb at 1:1000. Secondary antibody: HRP Goat Anti-Rabbit IgG (H+L) at 1:5000. Lysates/proteins: 30ug per lane. Blocking buffer: 5% non-fat dry milk in TBST. Detection: ECL Enhanced Kit. Exposure time: 120s.

实验步骤

访问官网浏览详情: www.ablybio.cn