

# LAT Rabbit mAb

货号: **AYM30188**

## 产品信息

反应	Human
宿主	Rabbit
克隆性	Monoclonal
预测反应	
应用	WB IHC
推荐浓度	<b>WB:</b> 1:500 - 1:2000 <b>IHC:</b> 1:50 - 1:200
理论分子量	24kDa/27kDa/28kDa
实测分子量	36,38kDa
形式	Liquid
保存条件	Store at -20°C. Avoid freeze / thaw cycles. Buffer: PBS with 0.75% BSA,50% glycerol,pH7.3.
偶联物	Unconjugated
阳性对照	THP-1
细胞定位	Cell membrane,Single-pass type III membrane protein
纯化	Affinity purification

## 抗原信息

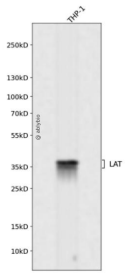
抗原信息	Recombinant fusion protein corresponding to Human LAT.
序列	PSSRRDSDGANSVASYENEGASGIRGAQAGWGVWGPSWTRLTPVSLPPEPACEDADEDEDYHNPGLVVLDPDSTPAT STAAPSAPALSTPGIRDSAFSMESIDYVNVPESGESAEASLDGSREYVNVSQELHPGAAKTEPAALSSQEAEVEEEGAP DYENLQELN

## 靶点信息

研究背景	The protein encoded by this gene is phosphorylated by ZAP-70/Syk protein tyrosine kinases following activation of the T-cell antigen receptor (TCR) signal transduction pathway. This transmembrane protein localizes to lipid rafts and acts as a docking site for SH2 domain-containing proteins. Upon phosphorylation, this protein recruits multiple adaptor proteins and downstream signaling molecules into multimolecular signaling complexes located near the site of TCR engagement. Alternative splicing results in multiple transcript variants encoding different isoforms.
------	---

基因ID	27040
基因名	LAT
Swiss	O43561
别名	LAT;LAT1;pp36;IMD52

## 产品验证



Western blot analysis of LAT expressed in THP-1 using LAT Rabbit mAb at 1:1000. Secondary antibody: HRP Goat Anti-Rabbit IgG (H+L) at 1:5000. Lysates/proteins: 30ug per lane. Blocking buffer: 5% non-fat dry milk in TBST. Detection: ECL Enhanced Kit. Exposure time: 120s.

## 实验步骤

访问官网浏览详情: [www.ablybio.cn](http://www.ablybio.cn)