

Claudin 4 Rabbit mAb

货号: **AYM30187**

产品信息

反应	Human
宿主	Rabbit
克隆性	Monoclonal
预测反应	
应用	WB IHC IP
推荐浓度	WB: 1:500 - 1:2000 IHC: 1:50 - 1:200 IP: 1:20 - 1:50
理论分子量	22kDa
实测分子量	18kDa
形式	Liquid
保存条件	Store at -20°C. Avoid freeze / thaw cycles. Buffer: PBS with 0.75% BSA,50% glycerol,pH7.3.
偶联物	Unconjugated
阳性对照	HT-29,A-431
细胞定位	Cell junction,Cell membrane,Multi-pass membrane protein,tight junction
纯化	Affinity purification

抗原信息

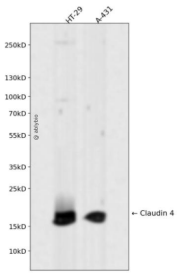
抗原信息	Recombinant fusion protein corresponding to Human Claudin 4 .
序列	VGGKCTNCLEDESAKAKTMIVAGVVFLLAGLMVIVPVSHTAHNIIQDFYNPLVASGQKREMGASLYVGWAASGLLLGGG LLCCNCPRTDKPYSAKYSAARSAAASNYV

靶点信息

研究背景	The protein encoded by this intronless gene belongs to the claudin family. Claudins are integral membrane proteins that are components of the epithelial cell tight junctions, which regulate movement of solutes and ions through the paracellular space. This protein is a high-affinity receptor for Clostridium perfringens enterotoxin (CPE) and may play a role in internal organ development and function during pre- and postnatal life. This gene is deleted in Williams-Beuren syndrome, a neurodevelopmental disorder affecting multiple systems.
------	--

基因ID	1364
基因名	CLDN4
Swiss	O14493
别名	CLDN4;CPE-R;CPER;CPETR;CPETR1;WBSCR8;hCPE-R;claudin-4

产品验证



Western blot analysis of Claudin 4 expressed in HT-29,A-431 using Claudin 4 Rabbit mAb at 1:1000. Secondary antibody: HRP Goat Anti-Rabbit IgG (H+L) at 1:5000. Lysates/proteins: 30ug per lane. Blocking buffer: 5% non-fat dry milk in TBST. Detection: ECL Enhanced Kit. Exposure time: 120s.

实验步骤

访问官网浏览详情: www.ablybio.cn