

VEGF Receptor 1 Rabbit mAb

货号: **AYM30171**

产品信息

反应	Human,Mouse,Rat
宿主	Rabbit
克隆性	Monoclonal
预测反应	
应用	WB IHC IF/ICC IP FC
推荐浓度	WB: 1:500 - 1:2000 IHC: 1:50 - 1:200 IF/ICC: 1:50 - 1:200 IP: 1:20 - 1:50 FC: 1:20 - 1:50
理论分子量	39kDa/41kDa/52- 82kDa/150kDa
实测分子量	151kDa
形式	Liquid
保存条件	Store at -20°C. Avoid freeze / thaw cycles. Buffer: PBS with 0.75% BSA,50% glycerol,pH7.3.
偶联物	Unconjugated
阳性对照	Mouse lung,Mouse kidney,Rat lung
细胞定位	Cell membrane,Cytoplasm,Endosome,Secreted,Single-pass type I membrane protein
纯化	Affinity purification

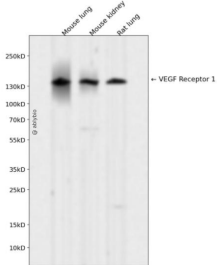
抗原信息

抗原信息	Recombinant fusion protein corresponding to Human VEGF Receptor 1.
序列	LTGSSSGSKLKDPELSLKGTHIMQAGQTLHLQCRGEEAAHKWSLPEMVSKESEKLSITKSACGRNGKQFCSTLTLNNTAQA NHTGFYSCKYLAVPTSKKTESAIYIFISDTGRPFVEMYSEIPEIHMTEGRELVIPCRVTSFNITVTLKKFPLDTLIPDGKRIIW DSRKGFIISNATYKEIGLLTCEATVNGHLYKTNLTHRQNTIIVQISTPRPVKLLRGHTLVLNCTATTPLNTRVQMTWSYYPD EKNKRASVRRRIDQSNSHANIFYSVLTIDK

靶点信息

研究背景	This gene encodes a member of the vascular endothelial growth factor receptor (VEGFR) family. VEGFR family members are receptor tyrosine kinases (RTKs) which contain an extracellular ligand-binding region with seven immunoglobulin (Ig)-like domains, a transmembrane segment, and a tyrosine kinase (TK) domain within the cytoplasmic domain. This protein binds to VEGFR-A, VEGFR-B and placental growth factor and plays an important role in angiogenesis and vasculogenesis. Expression of this receptor is found in vascular endothelial cells, placental trophoblast cells and peripheral blood monocytes. Multiple transcript variants encoding different isoforms have been found for this gene. Isoforms include a full-length transmembrane receptor isoform and shortened, soluble isoforms. The soluble isoforms are associated with the onset of pre-eclampsia.
基因ID	2321
基因名	FLT1
Swiss	P17948
别名	FLT;FLT-1;VEGFR-1;VEGFR1;FLT1

产品验证



Western blot analysis of VEGF Receptor 1 expressed in Mouse lung, Mouse kidney, Rat lung using VEGF Receptor 1 Rabbit mAb at 1:1000. Secondary antibody: HRP Goat Anti-Rabbit IgG (H+L) at 1:5000. Lysates/proteins: 30ug per lane. Blocking buffer: 5% non-fat dry milk in TBST. Detection: ECL Enhanced Kit. Exposure time: 120s.

实验步骤

访问官网浏览详情: www.ablybio.cn