

NEFH Rabbit mAb

货号: **AYM30163**

产品信息

反应	Human,Mouse,Rat
宿主	Rabbit
克隆性	Monoclonal
预测反应	
应用	WB IHC
推荐浓度	WB: 1:500 - 1:2000 IHC: 1:50 - 1:200
理论分子量	200kDa
实测分子量	200kDa
形式	Liquid
保存条件	Store at -20°C. Avoid freeze / thaw cycles. Buffer: PBS with 0.75% BSA,50% glycerol,pH7.3.
偶联物	Unconjugated
阳性对照	PC-3,Mouse brain,Rat brain
细胞定位	axon,cytoplasm,cytoskeleton,neurofilament,postsynaptic density,postsynaptic intermediate filament cyto skeleton,Schaffer collateral - CA1 synapse
纯化	Affinity purification

抗原信息

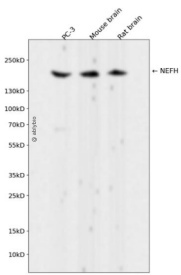
抗原信息	Recombinant fusion protein corresponding to Human NEFH.
序列	AKSPAKEEAKSPPEAKSPEKEEAKSPAIEVKSPEKAKSPAKEEAKSPAIEAKSPEKAKSPVKEEAKSPAIEAKSPVKEEAKSPAIE VKSPEKAKSPTKEEAKSPE

靶点信息

研究背景	Neurofilaments are type IV intermediate filament heteropolymers composed of light, medium, and heavy chains. Neurofilaments comprise the axoskeleton and functionally maintain neuronal caliber. They may also play a role in intracellular transport to axons and dendrites. This gene encodes the heavy neurofilament protein. This protein is commonly used as a biomarker of neuronal damage and susceptibility to amyotrophic lateral sclerosis (ALS) has been associated with mutations in this gene. [provided by RefSeq, Oct 20 08]
------	---

基因ID	4744
基因名	NEFH
Swiss	P12036
别名	CMT2CC;NFH;NEFH

产品验证



Western blot analysis of NEFH expressed in PC-3, Mouse brain, Rat brain using NEFH Rabbit mAb at 1:10 00. Secondary antibody: HRP Goat Anti-Rabbit IgG (H+L) at 1:5000. Lysates/proteins: 30ug per lane. Blocking buffer: 5% non-fat dry milk in TBST. Detection: ECL Enhanced Kit. Exposure time: 120s.

实验步骤

访问官网浏览详情: www.ablybio.cn