

Phospho-Cdc6 (S54) Rabbit mAb

货号: **AYM30151**

产品信息

反应	Human
宿主	Rabbit
克隆性	Monoclonal
预测反应	
应用	WB IF/ICC
推荐浓度	WB: 1:500 - 1:2000 IF/ICC: 1:50 - 1:200
理论分子量	62kDa
实测分子量	63kDa
形式	Liquid
保存条件	Store at -20°C. Avoid freeze / thaw cycles. Buffer: PBS with 0.75% BSA, 50% glycerol, pH7.3.
偶联物	Unconjugated
阳性对照	HeLa
细胞定位	Cytoplasm, Nucleus
纯化	Affinity purification

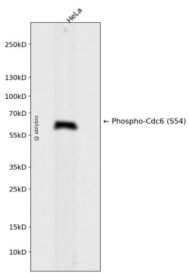
抗原信息

抗原信息	Recombinant fusion protein corresponding to Human Phospho-Cdc6 (S54).
序列	MPQTRSQAQATISFPRKLSRALNKAKNSSDAKLEPTNVQTVTCSPRVKALPLSPRKRLGDDNLCNTPHLPPCSPPKQGGK ENGPPTSHTLKGRRLVFDNQTLIKSPSKRELAKVHQNKILSSVRKSQEITTNSEQRCPKESACVRLFKEGTCYQQAKLV LNTAVPDRLPAREREMDVIRNFLREHICGKKAGSLYLSGAPGTGKTACLSRILQDLKELKGFKTIMLNCMSLRTAQAVFPAI AQEICQEEVSRPAGKDMMRKLEKHMTAEKGPMIVLVLEMDQLDSKGDVLYTLFEWPWLSNSHLVLIGIANTLDLTDR LPRLQAREKCKPQLLNFPYTRNQIVTLQDRLNQVSRDQVLDNAAVQFCARKVSAVSGDVRKALDVCRAIEIVESDVKS QTILKPLSECKSPSEPLIPKRVLGHISQVISEVDGNRMQLSQEGAQDSFPLQKILVCSLMLLIRQLKIKEVTLGKLYEAYSKV CRKQQAQAVDQSECLSLSGLLEARGILGLKRNKETRLTKVFFKIEEKEIEHALKDKALIGNILATGLP

靶点信息

研究背景	The protein encoded by this gene is highly similar to <i>Saccharomyces cerevisiae</i> Cdc6, a protein essential for the initiation of DNA replication. This protein functions as a regulator at the early steps of DNA replication. It localizes in cell nucleus during cell cycle G1, but translocates to the cytoplasm at the start of S phase. The subcellular translocation of this protein during cell cycle is regulated through its phosphorylation by Cdk. Transcription of this protein was reported to be regulated in response to mitogenic signals through transcriptional control mechanism involving E2F proteins.
基因ID	990
基因名	CDC6
Swiss	Q99741
别名	CDC18L;HsCDC6;MGORS5;HsCDC18;CDC6

产品验证



Western blot analysis of Phospho-Cdc6 (S54) expressed in HeLa using Phospho-Cdc6 (S54) Rabbit mAb at 1:1000. Secondary antibody: HRP Goat Anti-Rabbit IgG (H+L) at 1:5000. Lysates/proteins: 30ug per lane. Blocking buffer: 5% non-fat dry milk in TBST. Detection: ECL Enhanced Kit. Exposure time: 120s.

实验步骤

访问官网浏览详情: www.ablybio.cn