

Pannexin 1 Rabbit mAb

货号: **AYM30150**

产品信息

反应	Human
宿主	Rabbit
克隆性	Monoclonal
预测反应	
应用	WB IP
推荐浓度	WB: 1:500 - 1:2000 IP: 1:20 - 1:50
理论分子量	47kDa/48kDa
实测分子量	48kDa
形式	Liquid
保存条件	Store at -20°C. Avoid freeze / thaw cycles. Buffer: PBS with 0.75% BSA, 50% glycerol, pH7.3.
偶联物	Unconjugated
阳性对照	DU145, HeLa, MCF7, Mouse skin, Mouse spleen, Mouse brain
细胞定位	Cell junction, Cell membrane, Endoplasmic reticulum membrane, Multi-pass membrane protein, Multi-pass membrane protein, gap junction
纯化	Affinity purification

抗原信息

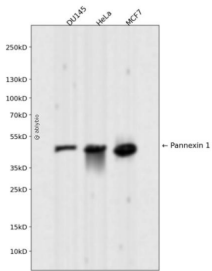
抗原信息	Recombinant fusion protein corresponding to Human Pannexin 1.
序列	ISLAFAQEISIGTQISCFSPSSFSWRQAQAFVDSYCWAQVQKNSLQSEGNLPLWLHKFFPYILLFFAILLYLPPLFWRFAAA PHICSDLKFIMEELDKVY

靶点信息

研究背景	The protein encoded by this gene belongs to the innexin family. Innexin family members are the structural components of gap junctions. This protein and pannexin 2 are abundantly expressed in central nerve system (CNS) and are coexpressed in various neuronal populations. Studies in <i>Xenopus</i> oocytes suggest that this protein alone and in combination with pannexin 2 may form cell type-specific gap junctions with distinct properties.
------	---

基因ID	24145
基因名	PANX1
Swiss	Q96RD7
别名	PANX1;MRS1;PX1;UNQ2529

产品验证



Western blot analysis of Pannexin 1 expressed in DU145, HeLa, MCF7 using Pannexin 1 Rabbit mAb at 1:1000. Secondary antibody: HRP Goat Anti-Rabbit IgG (H+L) at 1:5000. Lysates/proteins: 30ug per lane. Blocking buffer: 5% non-fat dry milk in TBST. Detection: ECL Enhanced Kit. Exposure time: 120s.

实验步骤

访问官网浏览详情: www.ablybio.cn