

# SERCA1 ATPase Rabbit mAb

货号: **AYM30144**

## 产品信息

反应	Human,Mouse,Rat
宿主	Rabbit
克隆性	Monoclonal
预测反应	
应用	WB
推荐浓度	<b>WB:</b> 1:500 - 1:2000
理论分子量	95kDa/109kDa/110kDa
实测分子量	110kDa
形式	Liquid
保存条件	Store at -20°C. Avoid freeze / thaw cycles. Buffer: PBS with 0.75% BSA,50% glycerol,pH7.3.
偶联物	Unconjugated
阳性对照	C2C12
细胞定位	Endoplasmic reticulum membrane,Multi-pass membrane protein,Sarcoplasmic reticulum membrane
纯化	Affinity purification

## 抗原信息

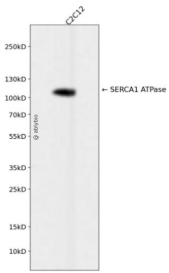
抗原信息	Recombinant fusion protein corresponding to Human SERCA1 ATPase.
序列	SDKTGTLTNQMVSCKMFIIDKVDGDICLLNEFSITGSTYAPEGEVLKNDKPVPRGQYDGLVELATICALCNDSSSLDFNEAK GVYEKVGAEATETALTTLVEKMNVFNTDVRSLKVERANACNSVIRQLMKKEFTLEFSRDRKSMSVYCSPAKSSRAAVGNK MFVKGAPEGVIDRCNYVRVGTTRVPLTGVPVKEKIMAVIKEWGTGRDTRLRCLALATRDTPPKREEMVLDD SARFLEYETDLT FVG VV GML

## 靶点信息

研究背景	This gene encodes one of the SERCA Ca(2+)-ATPases, which are intracellular pumps located in the sarcoplasmic or endoplasmic reticula of muscle cells. This enzyme catalyzes the hydrolysis of ATP coupled with the translocation of calcium from the cytosol to the sarcoplasmic reticulum lumen, and is involved in muscular excitation and contraction. Mutations in this gene cause some autosomal recessive forms of Brody disease, characterized by increasing impairment of muscular relaxation during exercise. Alternative splicing results in three transcript variants encoding different isoforms.
------	---

基因ID	487
基因名	ATP2A1
Swiss	O14983
别名	ATP2A1;ATP2A;SERCA1

## 产品验证



Western blot analysis of SERCA1 ATPase expressed in C2C12 using SERCA1 ATPase Rabbit mAb at 1:100. Secondary antibody: HRP Goat Anti-Rabbit IgG (H+L) at 1:5000. Lysates/proteins: 30ug per lane. Blocking buffer: 5% non-fat dry milk in TBST. Detection: ECL Enhanced Kit. Exposure time: 120s.

## 实验步骤

访问官网浏览详情: [www.ablybio.cn](http://www.ablybio.cn)