

Cytokeratin 8 Rabbit mAb

货号: **AYM30135**

产品信息

反应	Human,Mouse
宿主	Rabbit
克隆性	Monoclonal
预测反应	
应用	WB IHC IF/ICC IP
推荐浓度	WB: 1:500 - 1:2000 IHC: 1:50 - 1:200 IF/ICC: 1:50 - 1:200 IP: 1:20 - 1:50
理论分子量	53kDa/56kDa
实测分子量	53kDa
形式	Liquid
保存条件	Store at -20°C. Avoid freeze / thaw cycles. Buffer: PBS with 0.75% BSA,50% glycerol,pH7.3.
偶联物	Unconjugated
阳性对照	HeLa,Jurkat,Rat liver
细胞定位	Cytoplasm,Nucleus,Nucleus matrix,nucleoplasm
纯化	Affinity purification

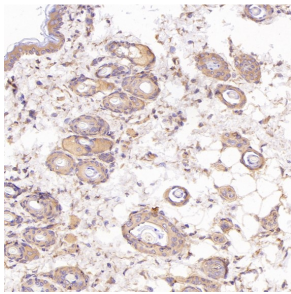
抗原信息

抗原信息	Recombinant fusion protein corresponding to Human Cytokeratin 8.
序列	MSIRVTQKSYKVSTSGPRAFSSRSYTSVSGPGRISSSSFSRVGSSNFRGGLGGGYGGASGMGGITAVTVNQSLLSPLVLEV DPNIQAVRTQEKEQIKTLNKNFASFIDKVRFLQQNKMLETKWSLLQQKTARSNMNMFSYINNLRRQLETLGQEKLKL EAELGNMQGLVEDFKNKYEDEINKRTEMENEFVLIKKDVDEAYMNKVELESRLGLELTDEINFLRQLYEEEEIRELQSQISDTSV VLSMDNSRSLDMSIIAEVKAQYEDIANRSRAEASMYQIKYEELQSLAGKHGDDLRRRTKTEISEMNRNISRLQAEIEGLKG QRASLEAAIADAEQRGELAIKDANAKLSELEAALQRAKQDMARQLREYQELMNVKLALDIEIATYRKLLEGEESRLESGMQN MSIHTKTTSGYAGGLSSAYGGLTSPGLSYSLGSSFGSGAGSSSFSRTSSSRVVVKKIETRDGKLVSESSDVLPK

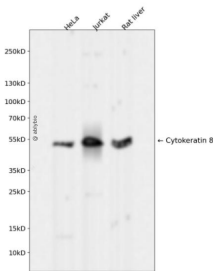
靶点信息

研究背景	This gene is a member of the type II keratin family clustered on the long arm of chromosome 12. Type I and type II keratins heteropolymerize to form intermediate-sized filaments in the cytoplasm of epithelial cells. The product of this gene typically dimerizes with keratin 18 to form an intermediate filament in simple single-layered epithelial cells. This protein plays a role in maintaining cellular structural integrity and also functions in signal transduction and cellular differentiation. Mutations in this gene cause cryptogenic cirrhosis. Alternatively spliced transcript variants have been found for this gene.
基因ID	3856
基因名	KRT8
Swiss	P05787
别名	KRT8;CARD2;CK-8;CK8;CYK8;K2C8;K8;KO;keratin 8

产品验证



Immunohistochemical analysis of paraffin-embedded Rat skin, using the Antibody at 1:300 dilution.



Western blot analysis of Cytokeratin 8 expressed in HeLa, Jurkat, Rat liver using Cytokeratin 8 Rabbit mAb at 1:1000. Secondary antibody: HRP Goat Anti-Rabbit IgG (H+L) at 1:5000. Lysates/proteins: 30ug per lane. Blocking buffer: 5% non-fat dry milk in TBST. Detection: ECL Enhanced Kit. Exposure time: 120s.

实验步骤

访问官网浏览详情: www.ablybio.cn