

Mannose Receptor (CD206) Rabbit mAb

货号: AYM30133

产品信息

反应	Human
宿主	Rabbit
克隆性	Monoclonal
预测反应	
应用	WB IF/ICC
推荐浓度	WB: 1:500 - 1:2000 IF/ICC: 1:50 - 1:200
理论分子量	56kDa/166kDa
实测分子量	166kDa
形式	Liquid
保存条件	Store at -20°C. Avoid freeze / thaw cycles. Buffer: PBS with 0.75% BSA,50% glycerol,pH7.3.
偶联物	Unconjugated
阳性对照	Mouse spleen,Rat liver
细胞定位	Cell membrane,Endosome membrane,Single-pass type I membrane protein
纯化	Affinity purification

抗原信息

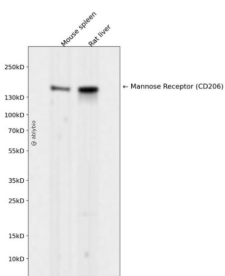
抗原信息	Recombinant fusion protein corresponding to Human Mannose Receptor (CD206).
------	---

序列	<p>LLDTRQFLIYNEDHKRCVDAVSPSAVQTAACNQDAESQKFRWVSESQIMSVAFKLCGLVPSKTDWVAITLYACDSKSEFQ KWECKNDTLLGIKGEDLFFNYGNRQEKNIIMLYKGSGLWSRWKIYGTDLNLC SRGYEAMYLLGNANGATCAFPFKFENK WYADCTSAGRSDGWLWCGTTTDDYDTDKLFGYCPLKFEGSESLWNKDPLTSVSYQINSKSALTW HQARKSCQQQNAEL LSITEIHEQTYLTGLTSSLTSGLWIGLNSLSFN SGWQWSDRSPFRYLNWLPGSPSAEPGKSCVSLNPGKNAKWENLECVQ KLG YICKGNTT LNSFVIPSESDVPTHCP SQW WPYAGHCYK IHRDEKKIQRDALTT CRKEGGDLTSIHTIEELDFIISQLGYE PNDELWIGLNDIKIQMYFEWSDGTPVTF TKWLRGEP SHENNRQEDCVVMKGKDG YWADRGC EWPLGYICKMKSRSQ PEIVEVEKGC RKGWKHHFYCYMIGHTLSTFAEANQTCNNENAYLTTIEDRYEQAF LTSFVGLRPEKYFWTGLSDIQTKGTF QWTIEEEVRFTHWNSDMPGRKPGCVAMRTGIAGGLWDVLKCD EAKAFVCKHWAEGVTHPPKPTTTPEPKCPEDWGAS SRTSLCFKLYAKGKHEKKTWFESRDFCRALGGDLASINNKEEQTIWRLITASGSYHKLFWLGLTYGSPSEGFTWSDGSP VSYENWAYGEPNNYQNVEYCGELKGDPTMSWNDINCEHLNNWICQIQKGQTPKPEPTAPQDNPPVTEDGWVVIYKDYQ YYFSKEKETMDNARAFCKRNFGLVSIQSESEKFLWKYVNRNDAQSAYFIGLLISLDK KFAWMDGSKVDYVSWATGEP NFANEDENCVTMYSNSGFWDINCGYPNAFICQRHNSSINATTVMPTMPSVPSGCKEGWNFYSNKCFKIFGMEERKN WQEARKACIGFGGNL VSIQNEKEQAF LTYHMKDSTFSAWTGLNDVNSEHTFLWTDGRGVHYTNWGKGYPGGRRSSLS YEDADCVVIIGGASNEAGKWMDDTCD SKRGYICQTRSDPSLTNPPATIQT DGFVKYKSSYS LMRQKFQWHEAETYCKL HNSLIASILD PYSNAFAWLQMETSN ERVWIALNSLTDNQYTWTDKWRVRYTNWAADEPKLSACVYLDLDGYWKT AH CNESFYFLCKRSDEIPATEPPQLPGRCPESDHTAWIPFHGH CYIESSYTRNWGQASLECLRMGSSLVSIESAAESSFLSYR VEPLKSKTNFWIGLFRNVEGTW LWINNSPVSFVNWNTGDPSGERND CVALHASSGFWSNIHCSSYKGYICKRPKIIDAKP THELLTKADTRKMDPSKPSSNVA</p>
----	---

靶点信息

研究背景	The recognition of complex carbohydrate structures on glycoproteins is an important part of several biological processes, including cell-cell recognition, serum glycoprotein turnover, and neutralization of pathogens. The protein encoded by this gene is a type I membrane receptor that mediates the endocytosis of glycoproteins by macrophages. The protein has been shown to bind high-mannose structures on the surface of potentially pathogenic viruses, bacteria, and fungi so that they can be neutralized by phagocytic engulfment.
基因ID	4360
基因名	MRC1
Swiss	P22897
别名	MRC1;CD206;CLEC13D;CLEC13DL;MMR;MRC1L1;bA541I19.1;hMR

产品验证



Western blot analysis of Mannose Receptor (CD206) expressed in Mouse spleen,Rat liver using Mannose Receptor (CD206) Rabbit mAb at 1:1000. Secondary antibody: HRP Goat Anti-Rabbit IgG (H+L) at 1:5000. Lysates/proteins: 30ug per lane. Blocking buffer: 5% non-fat dry milk in TBST. Detection: ECL Enhanced Kit. Exposure time: 120s.

实验步骤

访问官网浏览详情: www.ablybio.cn