

PKC delta Rabbit mAb

货号: **AYM30132**

产品信息

反应	Human,Mouse,Rat
宿主	Rabbit
克隆性	Monoclonal
预测反应	
应用	WB IHC IF/ICC
推荐浓度	WB: 1:500 - 1:2000 IHC: 1:50 - 1:200 IF/ICC: 1:50 - 1:200
理论分子量	78kDa
实测分子量	78kDa
形式	Liquid
保存条件	Store at -20°C. Avoid freeze / thaw cycles. Buffer: PBS with 0.75% BSA,50% glycerol,pH7.3.
偶联物	Unconjugated
阳性对照	HeLa,NIH/3T3,SH-SY5Y,Mouse brain,Rat brain
细胞定位	Cell membrane,Cytoplasm,Endoplasmic reticulum,Mitochondrion,Nucleus,Peripheral membrane protein,perinuclear region
纯化	Affinity purification

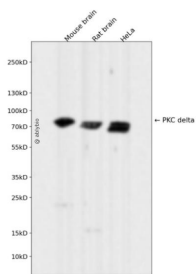
抗原信息

抗原信息	Recombinant fusion protein corresponding to Human PKC delta.
序列	PFHGDDEDELFSIRVDTPHYRWITKESKDILEKLFEREPTKRLGVTGNIKIHPFFKTINWTLLEKRRLEPPFRPKVKSPRDY SNFDQEFLNEKARLSYSDKNLID

靶点信息

研究背景	Protein kinase C (PKC) is a family of serine- and threonine-specific protein kinases that can be activated by calcium and the second messenger diacylglycerol. PKC family members phosphorylate a wide variety of protein targets and are known to be involved in diverse cellular signaling pathways. PKC family members also serve as major receptors for phorbol esters, a class of tumor promoters. Each member of the PKC family has a specific expression profile and is believed to play distinct roles in cells. The protein encoded by this gene is one of the PKC family members. Studies both in human and mice demonstrate that this kinase is involved in B cell signaling and in the regulation of growth, apoptosis, and differentiation of a variety of cell types. Alternatively spliced transcript variants encoding the same protein have been observed. [provided by RefSeq, Jul 2008]
基因ID	5580
基因名	PRKCD
Swiss	Q05655
别名	ALPS3; CVID9; MAY1; PKCD; nPKC-delta

产品验证



Western blot analysis of PKC delta expressed in Mouse brain, Rat brain, HeLa using PKC delta Rabbit mAb at 1:1000. Secondary antibody: HRP Goat Anti-Rabbit IgG (H+L) at 1:5000. Lysates/proteins: 30ug per lane. Blocking buffer: 5% non-fat dry milk in TBST. Detection: ECL Enhanced Kit. Exposure time: 120 S.

实验步骤

访问官网浏览详情: www.ablybio.cn