

MEIS2 Rabbit mAb

货号: **AYM30123**

产品信息

反应	Human,Mouse,Rat
宿主	Rabbit
克隆性	Monoclonal
预测反应	
应用	WB FC
推荐浓度	WB: 1:500 - 1:2000 FC: 1:20 - 1:50
理论分子量	32kDa/33kDa/41kDa/42kDa/43kDa/51kDa
实测分子量	52kDa
形式	Liquid
保存条件	Store at -20°C. Avoid freeze / thaw cycles. Buffer: PBS with 0.75% BSA,50% glycerol,pH7.3.
偶联物	Unconjugated
阳性对照	Mouse kidney,Mouse heart,Rat kidney
细胞定位	Cytoplasm,Nucleus,perinuclear region
纯化	Affinity purification

抗原信息

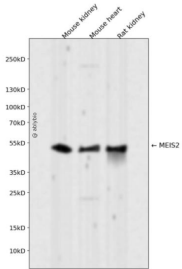
抗原信息	Recombinant fusion protein corresponding to Human MEIS2.
序列	AYSPEGQPMGSFVLDGQQHMGIRPAGLQSMPGDYVSQGGPMGMSMAQPSYTPPQMTPHPTQLRHGPPMHSYLPESH HHPAMMMHGGPPTHGPMTMSAQSPMLNSVDPNVGGQVMDIHAQ

靶点信息

研究背景	This gene encodes a homeobox protein belonging to the TALE ('three amino acid loop extension') family of homeodomain-containing proteins. TALE homeobox proteins are highly conserved transcription regulators, and several members have been shown to be essential contributors to developmental programs. Multiple transcript variants encoding distinct isoforms have been described for this gene.
基因ID	4212

基因名	MEIS2
Swiss	O14770
别名	MEIS2;HsT18361;MRG1;CPCMR

产品验证



Western blot analysis of MEIS2 expressed in Mouse kidney, Mouse heart, Rat kidney using MEIS2 Rabbit mAb at 1:1000. Secondary antibody: HRP Goat Anti-Rabbit IgG (H+L) at 1:5000. Lysates/proteins: 30ug per lane. Blocking buffer: 5% non-fat dry milk in TBST. Detection: ECL Enhanced Kit. Exposure time: 120 S.

实验步骤

访问官网浏览详情: www.ablybio.cn