

ESE1 Rabbit mAb

货号: **AYM30112**

产品信息

反应	Human,Mouse,Rat
宿主	Rabbit
克隆性	Monoclonal
预测反应	
应用	WB FC
推荐浓度	WB: 1:500 - 1:2000 FC: 1:20 - 1:50
理论分子量	39kDa/41kDa
实测分子量	47kDa
形式	Liquid
保存条件	Store at -20°C. Avoid freeze / thaw cycles. Buffer: PBS with 0.75% BSA,50% glycerol,pH7.3.
偶联物	Unconjugated
阳性对照	A-431,SK-BR-3
细胞定位	Cytoplasm,Nucleus
纯化	Affinity purification

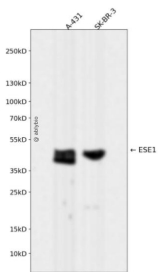
抗原信息

抗原信息	Recombinant fusion protein corresponding to Human ESE1.
序列	MAATCEISNIFSNYFSAMYSSDSTLASVPPAATFGADDLVLTLSNPQMSLEGTEKASWLGEQPQFWSKTQVLDWISYQV EKNKYDASAI DFSRCDMDGATLCNCALEELRLVFGPLGDLHAQLRDLTSSSSDEL SWIIELLEKDGMAFQEALDPGPF QGSPFAQELLDDGQASPYHPGSCGAGAPSPGSSDVSTAGTGASRSSHSSDSSGSDVDLDPDPTDGKLFPSDGFDRDCKK GDPKHGKRKRGRPRKLSKEYWDCLEGKSKHAPRGTHLWEFIR

靶点信息

研究背景	Transcriptional activator that binds and transactivates ETS sequences containing the consensus nucleotide core sequence GGA[AT]. Acts synergistically with POU2F3 to transactivate the SPRR2A promoter and with RUNX1 to transactivate the ANGPT1 promoter. Also transactivates collagenase, CCL20, CLND7, FLG, KRT8, NOS2, PTGS2, SPRR2B, TGFBR2 and TGM3 promoters. Represses KRT4 promoter activity. Involved in mediating vascular inflammation. May play an important role in epithelial cell differentiation and tumorigenesis. May be a critical downstream effector of the ERBB2 signaling pathway. May be associated with mammary gland development and involution. Plays an important role in the regulation of transcription with TATA-less promoters in preimplantation embryos, which is essential in preimplantation development (By similarity).
基因ID	1999
基因名	ELF3
Swiss	P78545
别名	ELF3;EPR-1;ERT;ESE-1;ESX

产品验证



Western blot analysis of ESE1 expressed in A-431,SK-BR-3 using ESE1 Rabbit mAb at 1:1000. Secondary antibody: HRP Goat Anti-Rabbit IgG (H+L) at 1:5000. Lysates/proteins: 30ug per lane. Blocking buffer: 5% non-fat dry milk in TBST. Detection: ECL Enhanced Kit. Exposure time: 120s.

实验步骤

访问官网浏览详情: www.ablybio.cn