

# HLA-DQA1 Rabbit mAb

货号: **AYM30104**

## 产品信息

反应	Human,Mouse,Rat
宿主	Rabbit
克隆性	Monoclonal
预测反应	
应用	WB IHC IP
推荐浓度	<b>WB:</b> 1:500 - 1:2000 <b>IHC:</b> 1:50 - 1:200 <b>IP:</b> 1:20 - 1:50
理论分子量	27kDa
实测分子量	28kDa
形式	Liquid
保存条件	Store at -20°C. Avoid freeze / thaw cycles. Buffer: PBS with 0.75% BSA,50% glycerol,pH7.3.
偶联物	Unconjugated
阳性对照	SW620,HT-29,Lovo,Mouse brain,Mouse stomach
细胞定位	Cell membrane,Endoplasmic reticulum membrane,Endosome membrane,Golgi apparatus,Lysosome membrane,Single-pass type I membrane protein,trans-Golgi network membrane
纯化	Affinity purification

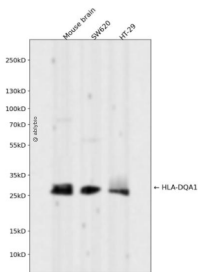
## 抗原信息

抗原信息	Recombinant fusion protein corresponding to Human HLA-DQA1.
序列	EDIVADHVASCGVNLYQFYGPSGQYTHEFDGDEQFYVDLERKETAWRWPEFSKFGGFDPPQALRNMAVAKHNLNIMIK RYNSTAATNEVPEVTVFSKSPVTLGQPNTLICLVDNIFPPVNVITWLSNGQSVTEGVSETSFLSKSDHSFFKISYLTFLPSAD EIYDCKVEHWGLDQPLLKHWEPEIPAPMSELT

## 靶点信息

研究背景	HLA-DQA1 belongs to the HLA class II alpha chain paralogues. The class II molecule is a heterodimer consisting of an alpha (DQA) and a beta chain (DQB), both anchored in the membrane. It plays a central role in the immune system by presenting peptides derived from extracellular proteins. Class II molecules are expressed in antigen presenting cells (APC: B Lymphocytes, dendritic cells, macrophages). The alpha chain is approximately 33-35 kDa. It is encoded by 5 exons; exon 1 encodes the leader peptide, exons 2 and 3 encode the two extracellular domains, and exon 4 encodes the transmembrane domain and the cytoplasmic tail. Within the DQ molecule both the alpha chain and the beta chain contain the polymorphisms specifying the peptide binding specificities, resulting in up to four different molecules. Typing for these polymorphisms is routinely done for bone marrow transplantation.
基因ID	3117
基因名	HLA-DQA1
Swiss	P01909
别名	HLA-DQA1;CELIAC1;DQ-A1;HLA-DQA;CD;GSE;class II

## 产品验证



Western blot analysis of HLA-DQA1 expressed in Mouse brain, SW620, HT-29 using HLA-DQA1 Rabbit m Ab at 1:1000. Secondary antibody: HRP Goat Anti-Rabbit IgG (H+L) at 1:5000. Lysates/proteins: 30ug per lane. Blocking buffer: 5% non-fat dry milk in TBST. Detection: ECL Enhanced Kit. Exposure time: 1 20s.

## 实验步骤

访问官网浏览详情: [www.ablybio.cn](http://www.ablybio.cn)