

CAP1 Rabbit mAb

货号: **AYM30098**

产品信息

反应	Human
宿主	Rabbit
克隆性	Monoclonal
预测反应	
应用	WB IHC IF/ICC
推荐浓度	WB: 1:500 - 1:2000 IHC: 1:50 - 1:200 IF/ICC: 1:50 - 1:200
理论分子量	51kDa
实测分子量	55kDa
形式	Liquid
保存条件	Store at -20°C. Avoid freeze / thaw cycles. Buffer: PBS with 0.75% BSA,50% glycerol,pH7.3.
偶联物	Unconjugated
阳性对照	HeLa,293T,A-431,HepG2,Rat thymus,Mouse thymus
细胞定位	Cell membrane,Peripheral membrane protein
纯化	Affinity purification

抗原信息

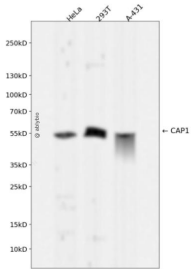
抗原信息	Recombinant fusion protein corresponding to Human CAP1.
序列	MADMQNLVERLERAVGRLEAVSHTSDMHRGYADSPSKAGAAPYVQAFDSSLGAPVAEYLIKISKEIGGDVQKHAEMVHTG LKLERALLVTASQCQPAENK

靶点信息

研究背景	The protein encoded by this gene is related to the <i>S. cerevisiae</i> CAP protein, which is involved in the cyclic AMP pathway. The human protein is able to interact with other molecules of the same protein, as well as with CAP2 and actin. Alternatively spliced transcript variants encoding different isoforms have been identified.
基因ID	10487

基因名	CAP1
Swiss	Q01518
别名	CAP1;CAP;CAP1-PEN

产品验证



Western blot analysis of CAP1 expressed in HeLa,293T,A-431 using CAP1 Rabbit mAb at 1:1000. Secondary antibody: HRP Goat Anti-Rabbit IgG (H+L) at 1:5000. Lysates/proteins: 30ug per lane. Blocking buffer: 5% non-fat dry milk in TBST. Detection: ECL Enhanced Kit. Exposure time: 120s.

实验步骤

访问官网浏览详情: www.ablybio.cn