

beta Casein Rabbit mAb

货号: **AYM30097**

产品信息

反应	Human
宿主	Rabbit
克隆性	Monoclonal
预测反应	
应用	WB IP
推荐浓度	WB: 1:500 - 1:2000 IP: 1:20 - 1:50
理论分子量	25kDa
实测分子量	25kDa
形式	Liquid
保存条件	Store at -20°C. Avoid freeze / thaw cycles. Buffer: PBS with 0.75% BSA,50% glycerol,pH7.3.
偶联物	Unconjugated
阳性对照	MCF7
细胞定位	Secreted
纯化	Affinity purification

抗原信息

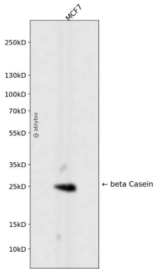
抗原信息	Recombinant fusion protein corresponding to Human beta Casein.
序列	MKVLILACLVALALARETIESLSSESSEESITEYKQKVEKVKHEDQQQGEDEHQDKIYPSFQPQLIYPFVEPIPYGFLPQNILPLA QPAVVLPVPQPEIME

靶点信息

研究背景	This gene is a member of the beta casein family. There are two types of casein protein, beta (encoded by this gene) and kappa, both of which are secreted in human milk. Beta casein is the principal protein in human milk and the primary source of essential amino acids for a suckling infant. Beta and kappa casein proteins acting together form spherical micelles which bind within them important dietary minerals, such as calcium and phosphorous. Alternative splicing results in multiple transcript variants.
基因ID	1447

基因名	CSN2
Swiss	P05814
别名	CSN2;CASB

产品验证



Western blot analysis of beta Casein expressed in MCF7 using beta Casein Rabbit mAb at 1:1000. Secondary antibody: HRP Goat Anti-Rabbit IgG (H+L) at 1:5000. Lysates/proteins: 30ug per lane. Blocking buffer: 5% non-fat dry milk in TBST. Detection: ECL Enhanced Kit. Exposure time: 120s.

实验步骤

访问官网浏览详情: www.ablybio.cn