

# ETS1 Rabbit mAb

货号: **AYM30094**

## 产品信息

反应	Human,Mouse
宿主	Rabbit
克隆性	Monoclonal
预测反应	
应用	WB FC
推荐浓度	<b>WB:</b> 1:500 - 1:2000 <b>FC:</b> 1:20 - 1:50
理论分子量	25kDa/30kDa/40kDa/50kDa/55kDa
实测分子量	46kDa
形式	Liquid
保存条件	Store at -20°C. Avoid freeze / thaw cycles. Buffer: PBS with 0.75% BSA,50% glycerol,pH7.3.
偶联物	Unconjugated
阳性对照	Jurkat
细胞定位	Cytoplasm,Nucleus
纯化	Affinity purification

## 抗原信息

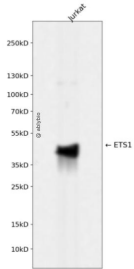
抗原信息	Recombinant fusion protein corresponding to Human ETS1.
序列	LELLTDKSCQSFSISWTGDGWEFKLSDPDEVARRWGKRKNPKMNYEKLSRGLRYYYDKNIIHKTAGKRYVYRFVCDLQSL LGYTPEELHAMLVDVKPDADE

## 靶点信息

研究背景	This gene encodes a member of the ETS family of transcription factors, which are defined by the presence of a conserved ETS DNA-binding domain that recognizes the core consensus DNA sequence GGAA/T in target genes. These proteins function either as transcriptional activators or repressors of numerous genes, and are involved in stem cell development, cell senescence and death, and tumorigenesis. Alternatively spliced transcript variants encoding different isoforms have been described for this gene.
基因ID	2113

基因名	ETS1
Swiss	P14921
别名	ETS-1;EWSR2;c-ets-1;p54;ETS1

## 产品验证



Western blot analysis of ETS1 expressed in Jurkat using ETS1 Rabbit mAb at 1:1000. Secondary antibody: HRP Goat Anti-Rabbit IgG (H+L) at 1:5000. Lysates/proteins: 30ug per lane. Blocking buffer: 5% non-fat dry milk in TBST. Detection: ECL Enhanced Kit. Exposure time: 120s.

## 实验步骤

访问官网浏览详情: [www.ablybio.cn](http://www.ablybio.cn)