

# Emi1 Rabbit mAb

货号: **AYM30093**

## 产品信息

反应	Human,Mouse,Rat
宿主	Rabbit
克隆性	Monoclonal
预测反应	
应用	WB IHC IF/ICC IP
推荐浓度	<b>WB:</b> 1:500 - 1:2000 <b>IHC:</b> 1:50 - 1:200 <b>IF/ICC:</b> 1:50 - 1:200 <b>IP:</b> 1:20 - 1:50
理论分子量	45kDa/50kDa
实测分子量	56kDa
形式	Liquid
保存条件	Store at -20°C. Avoid freeze / thaw cycles. Buffer: PBS with 0.75% BSA,50% glycerol,pH7.3.
偶联物	Unconjugated
阳性对照	Mouse kidney,Rat liver,Rat kidney
细胞定位	cytoplasm,cytosol,meiotic spindle,nucleoplasm,nucleus,spindle
纯化	Affinity purification

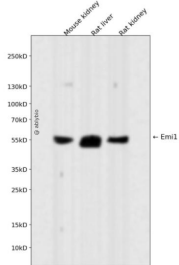
## 抗原信息

抗原信息	Recombinant fusion protein corresponding to Human Emi1.
序列	MSRRPCSCALRPPRCSCSASPVAFTAAGRPRPSDSCKEESSTLSVKMKCDFNCNHVHSGLKLVPDDIGRLVSYTPAYLE GCKDCIKDYERLSCIGSPIVSPRIVQLETESKRLHNKENQHVQQLNSTNEIEALETSLRYEDSGYSSFLQSGLEHEEGS LLEENFGDSLQSCLLQIQSPDQYPKNLLPVLHFEKVVCSTLKKNAKRNPKVDREMLKEIIARGNFRLLQNIIGRKMGLECVDI LSEL

## 靶点信息

研究背景	This gene encodes a member of the F-box protein family which is characterized by an approximately 40 amino acid motif, the F-box. The F-box proteins constitute one of the four subunits of the ubiquitin protein ligase complex called SCFs (SKP1-cullin-F-box), which function in phosphorylation-dependent ubiquitination. The F-box proteins are divided into 3 classes: Fbws containing WD-40 domains, Fbls containing leucine-rich repeats, and Fbxs containing either different protein-protein interaction modules or no recognizable motifs. The protein encoded by this gene belongs to the Fbxs class. This protein is similar to xenopus early mitotic inhibitor-1 (Emi1), which is a mitotic regulator that interacts with Cdc20 and inhibits the anaphase promoting complex. Alternatively spliced transcript variants encoding different isoforms have been identified.
基因ID	26271
基因名	FBXO5
Swiss	Q9UKT4
别名	EMI1;FBX5;Fbxo31;FBXO5

## 产品验证



Western blot analysis of Emi1 expressed in Mouse kidney,Rat liver,Rat kidney using Emi1 Rabbit mAb at 1:1000. Secondary antibody: HRP Goat Anti-Rabbit IgG (H+L) at 1:5000. Lysates/proteins: 30ug per lane . Blocking buffer: 5% non-fat dry milk in TBST. Detection: ECL Enhanced Kit. Exposure time: 120s.

## 实验步骤

访问官网浏览详情: [www.ablybio.cn](http://www.ablybio.cn)