

GRK6 Rabbit mAb

货号: **AYM30087**

产品信息

反应	Human,Mouse
宿主	Rabbit
克隆性	Monoclonal
预测反应	
应用	WB
推荐浓度	WB: 1:500 - 1:2000
理论分子量	64kDa/65kDa/67kDa
实测分子量	66kDa
形式	Liquid
保存条件	Store at -20°C. Avoid freeze / thaw cycles. Buffer: PBS with 0.75% BSA,50% glycerol,pH7.3.
偶联物	Unconjugated
阳性对照	MCF7,Jurkat,293T
细胞定位	Lipid-anchor,Membrane
纯化	Affinity purification

抗原信息

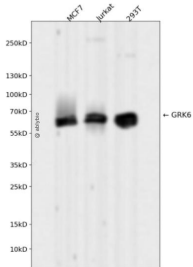
抗原信息	Recombinant fusion protein corresponding to Human GRK6.
序列	GGDLKFHIYHMGQAGFPEARAVFYAAEICCGLEDLHRERIVYRDLKPENILLDDHGHIRISDLGLAVHVPEGQTIKGRVGTV GYMAPEVVKNERYTFSPDWWALGCLLYEMIAGQSPFQQRKKKIKREEVERLVKEVPPEYSERFSPQARS LCSQLLCKDPAE RLGCRGGSAREVKEHPLFKLNFKRLGAGMLEPPF

靶点信息

研究背景	This gene encodes a member of the guanine nucleotide-binding protein (G protein)-coupled receptor kinase subfamily of the Ser/Thr protein kinase family. The protein phosphorylates the activated forms of G protein-coupled receptors thus initiating their deactivation. Several transcript variants encoding different isoforms have been described for this gene.
基因ID	2870

基因名	GRK6
Swiss	P43250
别名	GRK6;GPRK6

产品验证



Western blot analysis of GRK6 expressed in MCF7, Jurkat, 293T using GRK6 Rabbit mAb at 1:1000. Secondary antibody: HRP Goat Anti-Rabbit IgG (H+L) at 1:5000. Lysates/proteins: 30ug per lane. Blocking buffer: 5% non-fat dry milk in TBST. Detection: ECL Enhanced Kit. Exposure time: 120s.

实验步骤

访问官网浏览详情: www.ablybio.cn