

PSMC5 Rabbit mAb

货号: **AYM30080**

产品信息

反应	Human,Mouse,Rat
宿主	Rabbit
克隆性	Monoclonal
预测反应	
应用	WB IHC IF/ICC IP FC
推荐浓度	WB: 1:500 - 1:2000 IHC: 1:50 - 1:200 IF/ICC: 1:50 - 1:200 IP: 1:20 - 1:50 FC: 1:20 - 1:50
理论分子量	44kDa/45kDa
实测分子量	46kDa
形式	Liquid
保存条件	Store at -20°C. Avoid freeze / thaw cycles. Buffer: PBS with 0.75% BSA,50% glycerol,pH7.3.
偶联物	Unconjugated
阳性对照	U2OS,HepG2,PC-12,MCF7,HeLa,293T,NIH/3T3
细胞定位	Cytoplasm,Nucleus
纯化	Affinity purification

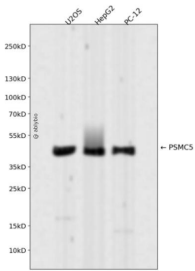
抗原信息

抗原信息	Recombinant fusion protein corresponding to Human PSMC5.
序列	LPNKVDPLVSLMMVEKVPDSTYEMIGGLDKQIKEIKEVIELPVKHPPELFEALGIAQPKGVLVLYGPPGTGKTLARAVAHHTDC TFIRVSGSELVQKFIGEGARMVRELFVMAREHAPSIIFMDEIDSIGSSRLEGGSGGDSEVQRTMLELLNQLDGFTEATKNIKVI MATNRIDILDSALLRPGRIDRKIEFPPNNEEARLDILKIHSRKMNLTRGINLRKIAELMPGASGAEVKGVCTEAGMYALRERRV HVTQEDFEMAVAKVMQKDSEKNMSIKKLWK

靶点信息

研究背景	The 26S proteasome is a multicatalytic proteinase complex with a highly ordered structure composed of 2 complexes, a 20S core and a 19S regulator. The 20S core is composed of 4 rings of 28 non-identical subunits; 2 rings are composed of 7 alpha subunits and 2 rings are composed of 7 beta subunits. The 19S regulator is composed of a base, which contains 6 ATPase subunits and 2 non-ATPase subunits, and a lid, which contains up to 10 non-ATPase subunits. Proteasomes are distributed throughout eukaryotic cells at a high concentration and cleave peptides in an ATP/ubiquitin-dependent process in a non-lysosomal pathway. An essential function of a modified proteasome, the immunoproteasome, is the processing of class I MHC peptides. This gene encodes one of the ATPase subunits, a member of the triple-A family of ATPases which have a chaperone-like activity. In addition to participation in proteasome functions, this subunit may participate in transcriptional regulation since it has been shown to interact with the thyroid hormone receptor and retinoid X receptor-alpha. Two transcript variants encoding different isoforms have been found for this gene.
基因ID	5705
基因名	PSMC5
Swiss	P62195
别名	PSMC5;S8;SUG-1;SUG1;TBP10;TRIP1;p45;p45/SUG;ATPase 5

产品验证



Western blot analysis of PSMC5 expressed in U2OS, HepG2, PC-12 using PSMC5 Rabbit mAb at 1:1000. Secondary antibody: HRP Goat Anti-Rabbit IgG (H+L) at 1:5000. Lysates/proteins: 30ug per lane. Blocking buffer: 5% non-fat dry milk in TBST. Detection: ECL Enhanced Kit. Exposure time: 120s.

实验步骤

访问官网浏览详情: www.ablybio.cn