

SENP2 Rabbit mAb

货号: **AYM30073**

产品信息

反应	Human
宿主	Rabbit
克隆性	Monoclonal
预测反应	
应用	WB IHC IF/ICC
推荐浓度	WB: 1:500 - 1:2000 IHC: 1:50 - 1:200 IF/ICC: 1:50 - 1:200
理论分子量	68kDa
实测分子量	68kDa
形式	Liquid
保存条件	Store at -20°C. Avoid freeze / thaw cycles. Buffer: PBS with 0.75% BSA,50% glycerol,pH7.3.
偶联物	Unconjugated
阳性对照	rat lung, rat testis
细胞定位	cytosol, nuclear membrane, nuclear pore, nucleoplasm, nucleus, PML body
纯化	Affinity purification

抗原信息

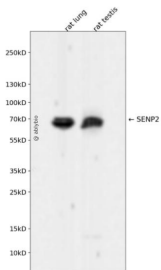
抗原信息	Recombinant fusion protein corresponding to Human SENP2.
序列	LELTEDMEKEISNALGHGPQDEILSSAFKLRITRGDIQTLKNYHWNDEVINFYMNLLVERNKKQGYPALHVFSTFFYPKLKSGGYQAVKRWTGKGNLFEQEIILVPIHRKVVHWSLVVIDLRKKCKLYLDSMGQKQHRICEILLQYLQDESKTKRNSDLNLEWTHHSMKPHEIPQQLNGSDCGMFTCKYADYISRDKPITFTQHQMPLFRKKMVWEILHQQLL

靶点信息

研究背景	SUMO1 (UBL1; MIM 601912) is a small ubiquitin-like protein that can be covalently conjugated to other proteins. SENP2 is one of a group of enzymes that process newly synthesized SUMO1 into the conjugatable form and catalyze the deconjugation of SUMO1-containing species.[supplied by OMIM, Apr 2004]
基因ID	59343

基因名	SENP2
Swiss	Q9HC62
别名	AXAM2;SMT3IP2;SENP2

产品验证



Western blot analysis of SENP2 expressed in rat lung, rat testis using SENP2 Rabbit mAb at 1:1000. Secondary antibody: HRP Goat Anti-Rabbit IgG (H+L) at 1:5000. Lysates/proteins: 30ug per lane. Blocking buffer: 5% non-fat dry milk in TBST. Detection: ECL Enhanced Kit. Exposure time: 120s.

实验步骤

访问官网浏览详情: www.ablybio.cn