

— ABLYBIO, Help Your Research



PAR6 Rabbit mAb

货号: **AYM30068**

产品信息

反应	Human,Mouse,Rat
宿主	Rabbit
克隆性	Monoclonal
预测反应	
应用	WB IP
推荐浓度	WB: 1:500 - 1:2000 IP: 1:20 - 1:50
理论分子量	37kDa
实测分子量	37kDa
形式	Liquid
保存条件	Store at -20°C. Avoid freeze / thaw cycles. Buffer: PBS with 0.75% BSA,50% glycerol,pH7.3.
偶联物	Unconjugated
阳性对照	SW620,HT-29,Jurkat,U-251MG,Raji,Mouse testis
细胞定位	Cell junction,Cell membrane,Cell projection,Cytoplasm,ruffle,tight junction
纯化	Affinity purification

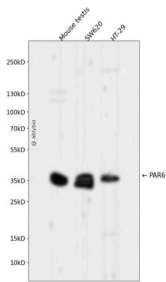
抗原信息

抗原信息	Recombinant fusion protein corresponding to Human PAR6.
------	---

靶点信息

研究背景	This gene is a member of the PAR6 family and encodes a protein with a PSD95/Discs-large/ZO1 (PDZ) domain and a semi-Cdc42/Rac interactive binding (CRIB) domain. This cell membrane protein is involved in asymmetrical cell division and cell polarization processes as a member of a multi-protein complex. The protein also has a role in the epithelial-to-mesenchymal transition (EMT) that characterizes the invasive phenotype associated with metastatic carcinomas. Alternate transcriptional splice variants, encoding different isoforms, have been characterized.
基因ID	50855
基因名	PARD6A
Swiss	Q9NPB6
别名	PAR6,PAR6 Rabbit mAb,PARD6A,PAR6C,Tax interaction protein 40,PAR6A

产品验证



Western blot analysis of PAR6 expressed in Mouse testis,SW620,HT-29 using PAR6 Rabbit mAb at 1:1000. Secondary antibody: HRP Goat Anti-Rabbit IgG (H+L) at 1:5000. Lysates/proteins: 30ug per lane. Blocking buffer: 5% non-fat dry milk in TBST. Detection: ECL Enhanced Kit. Exposure time: 120s.

实验步骤

访问官网浏览详情: www.ablybio.cn (<https://www.ablybio.cn/>www.ablybio.cn)