

Cdc25C Rabbit mAb

货号: **AYM30066**

产品信息

反应	Human
宿主	Rabbit
克隆性	Monoclonal
预测反应	
应用	WB IHC IF/ICC IP FC
推荐浓度	WB: 1:500 - 1:2000 IHC: 1:50 - 1:200 IF/ICC: 1:50 - 1:200 IP: 1:20 - 1:50 FC: 1:20 - 1:50
理论分子量	45kDa/48kDa/50kDa/53kDa
实测分子量	60kDa
形式	Liquid
保存条件	Store at -20°C. Avoid freeze / thaw cycles. Buffer: PBS with 0.75% BSA,50% glycerol,pH7.3.
偶联物	Unconjugated
阳性对照	Mouse lung,Mouse thymus,Rat thymus
细胞定位	Nucleus
纯化	Affinity purification

抗原信息

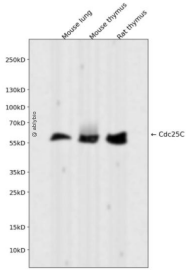
抗原信息	Recombinant fusion protein corresponding to Human Cdc25C.
序列	SFRSNQRKMLNLLLERDTSFTVCPDVPRTVPVGKFLGDSANLSILSGGTPKRCLDLNLSSGEITATQLTTSADLDETHLD SSGLQEVHLAGMNHQHLMKCSPAQLLCST

靶点信息

研究背景	This gene encodes a conserved protein that plays a key role in the regulation of cell division. The encoded protein directs dephosphorylation of cyclin B-bound CDC2 and triggers entry into mitosis. It also suppresses p53-induced growth arrest. Multiple alternatively spliced transcript variants of this gene have been described.
------	--

基因ID	995
基因名	CDC25C
Swiss	P30307
别名	CDC25C;CDC25;PPP1R60

产品验证



Western blot analysis of Cdc25C expressed in Mouse lung, Mouse thymus, Rat thymus using Cdc25C Rabbit mAb at 1:1000. Secondary antibody: HRP Goat Anti-Rabbit IgG (H+L) at 1:5000. Lysates/proteins: 30ug per lane. Blocking buffer: 5% non-fat dry milk in TBST. Detection: ECL Enhanced Kit. Exposure time: 120s.

实验步骤

访问官网浏览详情: www.ablybio.cn