

Alpha actinin 2 Rabbit mAb

货号: **AYM30065**

产品信息

反应	Human,Mouse,Rat
宿主	Rabbit
克隆性	Monoclonal
预测反应	
应用	WB IHC IP
推荐浓度	WB: 1:500 - 1:2000 IHC: 1:50 - 1:200 IP: 1:20 - 1:50
理论分子量	103kDa
实测分子量	103kDa
形式	Liquid
保存条件	Store at -20°C. Avoid freeze / thaw cycles. Buffer: PBS with 0.75% BSA,50% glycerol,pH7.3.
偶联物	Unconjugated
阳性对照	RD,Mouse lung,Mouse skeletal muscle,Mouse heart,Rat skeletal muscle
细胞定位	Cytoplasm,Z line,myofibril,sarcomere
纯化	Affinity purification

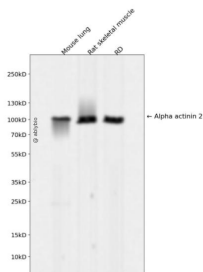
抗原信息

抗原信息	Recombinant fusion protein corresponding to Human Alpha actinin 2.
序列	MNQIEPGVQYNYVYDEDEYMIQEEEWDRLLLLDPAWEKQQRKFTAWCNSHLRKAGTQIENIEEDFRNGLKMLLLEVIS GERLPKPDRGKMRFHKIANV

靶点信息

研究背景	Alpha actinins belong to the spectrin gene superfamily which represents a diverse group of cytoskeletal proteins, including the alpha and beta spectrins and dystrophins. Alpha actinin is an actin-binding protein with multiple roles in different cell types. In nonmuscle cells, the cytoskeletal isoform is found along microfilament bundles and adherens-type junctions, where it is involved in binding actin to the membrane. In contrast, skeletal, cardiac, and smooth muscle isoforms are localized to the Z-disc and analogous dense bodies, where they help anchor the myofibrillar actin filaments. This gene encodes a muscle-specific, alpha actinin isoform that is expressed in both skeletal and cardiac muscles. Several transcript variants encoding different isoforms have been found for this gene. [provided by RefSeq, May 2013]
基因ID	88
基因名	ACTN2
Swiss	P35609
别名	CMD1AA; CMH23

产品验证



Western blot analysis of Alpha actinin 2 expressed in Mouse lung, Rat skeletal muscle, RD using Alpha actinin 2 Rabbit mAb at 1:1000. Secondary antibody: HRP Goat Anti-Rabbit IgG (H+L) at 1:5000. Lysates/proteins: 30ug per lane. Blocking buffer: 5% non-fat dry milk in TBST. Detection: ECL Enhanced Kit. Exposure time: 120s.

实验步骤

访问官网浏览详情: www.ablybio.cn