

Creatine kinase B type Rabbit mAb

货号: **AYM30064**

产品信息

反应	Human,Mouse,Rat
宿主	Rabbit
克隆性	Monoclonal
预测反应	
应用	WB IHC IF/ICC IP FC
推荐浓度	WB: 1:500 - 1:2000 IHC: 1:50 - 1:200 IF/ICC: 1:50 - 1:200 IP: 1:20 - 1:50 FC: 1:20 - 1:50
理论分子量	42kDa
实测分子量	43kDa
形式	Liquid
保存条件	Store at -20°C. Avoid freeze / thaw cycles. Buffer: PBS with 0.75% BSA,50% glycerol,pH7.3.
偶联物	Unconjugated
阳性对照	A-549,HT-29,HeLa,Mouse brain,Rat spinal cord
细胞定位	Cytoplasm
纯化	Affinity purification

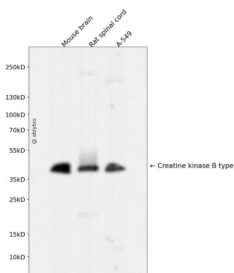
抗原信息

抗原信息	Recombinant fusion protein corresponding to Human Creatine kinase B type.
序列	AEQQQLIDDHFLFDKPVSPLLLASGMARDWPDARGIWHNDNKTFVWVNEEDHLRVISMQKGGNMKEVFTRFCTGLTQ IETLFKSKDYEFMWNPHLGYILTCPSNLGTGLRAGVHIKLPNLGKHEKFSEVLKRLRLQKRGTGGVDTAAVGGVFDVSNA DRLGFSEVELVQMVDGKLLIEMEQRLEQQQAIDDLMPAQK

靶点信息

研究背景	The protein encoded by this gene is a cytoplasmic enzyme involved in energy homeostasis. The encoded protein reversibly catalyzes the transfer of phosphate between ATP and various phosphogens such as creatine phosphate. It acts as a homodimer in brain as well as in other tissues, and as a heterodimer with a similar muscle isozyme in heart. The encoded protein is a member of the ATP:guanido phosphotransferase protein family. A pseudogene of this gene has been characterized.
基因ID	1152
基因名	CKB
Swiss	P12277
别名	CKB;B-CK;BCK;CKBB;HEL-211;HEL-S-29

产品验证



Western blot analysis of Creatine kinase B type expressed in Mouse brain,Rat spinal cord,A-549 using Creatine kinase B type Rabbit mAb at 1:1000. Secondary antibody: HRP Goat Anti-Rabbit IgG (H+L) at 1:5000. Lysates/proteins: 30ug per lane. Blocking buffer: 5% non-fat dry milk in TBST. Detection: ECL Enhanced Kit. Exposure time: 120s.

实验步骤

访问官网浏览详情: www.ablybio.cn