

# ELK1 Rabbit mAb

货号: **AYM30056**

## 产品信息

反应	Human,Mouse,Rat
宿主	Rabbit
克隆性	Monoclonal
预测反应	
应用	WB IHC ICC IP
推荐浓度	<b>WB:</b> 1:500 - 1:2000 <b>IHC:</b> 1:50 - 1:200 <b>ICC:</b> 1:50 - 1:200 <b>IP:</b> 1:20 - 1:50
理论分子量	11kDa/44kDa
实测分子量	62kDa
形式	Liquid
保存条件	Store at -20°C. Avoid freeze / thaw cycles. Buffer: PBS with 0.75% BSA,50% glycerol,pH7.3.
偶联物	Unconjugated
阳性对照	HeLa,Mouse placenta,Rat heart
细胞定位	Nucleus
纯化	Affinity purification

## 抗原信息

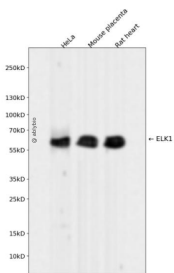
抗原信息	Recombinant fusion protein corresponding to Human ELK1.
序列	PSPLEACLEAEEAGLPLQVILTPPEAPNLKSEELNVEPGLGRALPPEVKVEGPKKELEVAGERGFVPETTKAEPEVPPQEGVPA RLPAVVMDTAGQA

## 靶点信息

研究背景	This gene is a member of the Ets family of transcription factors and of the ternary complex factor (TCF) s ubfamily. Proteins of the TCF subfamily form a ternary complex by binding to the the serum response fact or and the serum response element in the promoter of the c-fos proto-oncogene. The protein encoded by this gene is a nuclear target for the ras-raf-MAPK signaling cascade. This gene produces multiple isoforms by using alternative translational start codons and by alternative splicing. Related pseudogenes have bee n identified on chromosomes 7 and 14.
------	--

基因ID	2002
基因名	ELK1
Swiss	P19419
别名	ELK1

### 产品验证



Western blot analysis of ELK1 expressed in HeLa, Mouse placenta, Rat heart using ELK1 Rabbit mAb at 1:1000. Secondary antibody: HRP Goat Anti-Rabbit IgG (H+L) at 1:5000. Lysates/proteins: 30ug per lane. Blocking buffer: 5% non-fat dry milk in TBST. Detection: ECL Enhanced Kit. Exposure time: 120s.

### 实验步骤

访问官网浏览详情: [www.ablybio.cn](http://www.ablybio.cn)