

Lamin A/C Rabbit mAb

货号: **AYM30054**

产品信息

反应	Human
宿主	Rabbit
克隆性	Monoclonal
预测反应	
应用	WB IHC IF/ICC IP FC
推荐浓度	WB: 1:500 - 1:2000 IHC: 1:50 - 1:200 IF/ICC: 1:50 - 1:200 IP: 1:20 - 1:50 FC: 1:20 - 1:50
理论分子量	62-74kDa
实测分子量	63kDa/74kDa
形式	Liquid
保存条件	Store at -20°C. Avoid freeze / thaw cycles. Buffer: PBS with 0.75% BSA,50% glycerol,pH7.3.
偶联物	Unconjugated
阳性对照	HeLa,NIH/3T3,PC-12
细胞定位	Nucleus,Nucleus envelope,Nucleus lamina,Nucleus speckle,nucleoplasm
纯化	Affinity purification

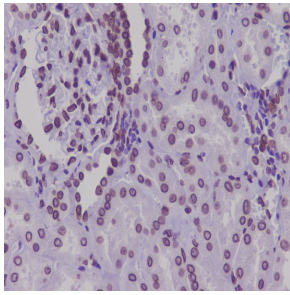
抗原信息

抗原信息	Recombinant fusion protein corresponding to Human Lamin A/C.
序列	SSHSSQTQGGGSVTKKRKLESTESRSSFSQHARTSGRVAVEEVDEEGKFVRLRNKSNEQSMGNWQIKRQNGDDPLLT YRFPPKFTLKAGQVVTIWAAGAGATHSPPTDLVWKAQNTWGCNLSLRTALINSTGEEVAMRKLVRSVTVVEDEDEDG DDLLHHHHGSHCSS

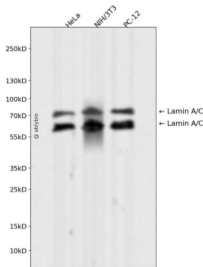
靶点信息

研究背景	The nuclear lamina consists of a two-dimensional matrix of proteins located next to the inner nuclear membrane. The lamin family of proteins make up the matrix and are highly conserved in evolution. During mitosis, the lamina matrix is reversibly disassembled as the lamin proteins are phosphorylated. Lamin proteins are thought to be involved in nuclear stability, chromatin structure and gene expression. Vertebrate lamins consist of two types, A and B. Alternative splicing results in multiple transcript variants. Mutations in this gene lead to several diseases: Emery-Dreifuss muscular dystrophy, familial partial lipodystrophy, limb girdle muscular dystrophy, dilated cardiomyopathy, Charcot-Marie-Tooth disease, and Hutchinson-Gilford progeria syndrome.
基因ID	4000
基因名	LMNA
Swiss	P02545
别名	LMNA;CDCD1;CDDC;CMD1A;CMT2B1;EMD2;FPL;FPLD;FPLD2;HGPS;IDC;LDP1;LFP;LGMD1B;LMN1;LMNC;LMNL1;MADA;PRO1;lamin;Lamin A/C

产品验证



Immunohistochemical analysis of paraffin-embedded human kidney, using Lamin A/C Antibody.



Western blot analysis of Lamin A/C expressed in HeLa,NIH/3T3,PC-12 using Lamin A/C Rabbit m Ab at 1:1000. Secondary antibody: HRP Goat Anti-Rabbit IgG (H+L) at 1:5000. Lysates/proteins : 30ug per lane. Blocking buffer: 5% non-fat dry milk in TBST. Detection: ECL Enhanced Kit. Exposure time: 120s.

实验步骤

访问官网浏览详情: www.ablybio.cn