

HSPA12A Rabbit mAb

货号: **AYM30037**

产品信息

反应	Human,Mouse,Rat
宿主	Rabbit
克隆性	Monoclonal
预测反应	
应用	WB IHC IF/ICC IP
推荐浓度	WB: 1:500 - 1:2000 IHC: 1:50 - 1:200 IF/ICC: 1:50 - 1:200 IP: 1:20 - 1:50
理论分子量	75kDa
实测分子量	75kDa
形式	Liquid
保存条件	Store at -20°C. Avoid freeze / thaw cycles. Buffer: PBS with 0.75% BSA,50% glycerol,pH7.3.
偶联物	Unconjugated
阳性对照	Mouse kidney,Rat kidney
细胞定位	cytoplasm,extracellular exosome,nucleus
纯化	Affinity purification

抗原信息

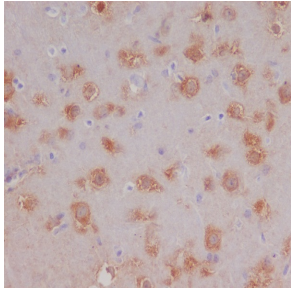
抗原信息	Recombinant fusion protein corresponding to Human HSPA12A.
序列	SEQQSFLVVAVDFGTTSSGYAYSFTKEPECIHVMRRWEGGDPGVSNQKTPPTILLTPERKFHSFGYAARDFYHDLDPNE AKQWLYLEKFKMKLHTTGLT

靶点信息

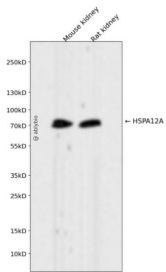
研究背景	Adapter protein for SORL1, but not SORT1. Delays SORL1 internalization and affects SORL1 subcellular localization.
基因ID	259217

基因名	HSPA12A
Swiss	O43301
别名	

产品验证



Immunohistochemical analysis of paraffin-embedded mouse brain, using HSPA12A Antibody.



Western blot analysis of HSPA12A expressed in Mouse kidney,Rat kidney using HSPA12A Rabbit mAb at 1:1000. Secondary antibody: HRP Goat Anti-Rabbit IgG (H+L) at 1:5000. Lysates/proteins: 30ug per lane. Blocking buffer: 5% non-fat dry milk in TBST. Detection: ECL Enhanced Kit. Exposure time: 120s.

实验步骤

访问官网浏览详情: www.ablybio.cn