

PREB Rabbit mAb

货号: **AYM30033**

产品信息

反应	Human
宿主	Rabbit
克隆性	Monoclonal
预测反应	
应用	WB IHC IF/ICC
推荐浓度	WB: 1:500 - 1:2000 IHC: 1:50 - 1:200 IF/ICC: 1:50 - 1:200
理论分子量	45kDa
实测分子量	45kDa
形式	Liquid
保存条件	Store at -20°C. Avoid freeze / thaw cycles. Buffer: PBS with 0.75% BSA,50% glycerol,pH7.3.
偶联物	Unconjugated
阳性对照	HepG2,MCF7,K-562,Mouse brain,Rat brain
细胞定位	Endoplasmic reticulum membrane,Nucleus,Single-pass membrane protein
纯化	Affinity purification

抗原信息

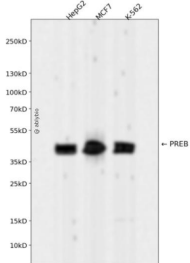
抗原信息	Recombinant fusion protein corresponding to Human PREB.
序列	HCQLLRFQAHQQQGNAEKAGSKEQGPRQRKGAAPAEKKCGAETQHEGLELRVENLQAVQTDFFSSDPLQKVCFNHD NTLLATGGTDGYVRVWKVPSLEKVLFEKAHEGEIED

靶点信息

研究背景	This gene encodes a protein that specifically binds to a Pit1-binding element of the prolactin (PRL) promoter. This protein may act as a transcriptional regulator and is thought to be involved in some of the developmental abnormalities observed in patients with partial trisomy 2p. This gene overlaps the abhydrolase domain containing 1 (ABHD1) gene on the opposite strand.
基因ID	10113

基因名	PREB
Swiss	Q9HCU5
别名	PREB;SEC12

产品验证



Western blot analysis of PREB expressed in HepG2, MCF7, K-562 using PREB Rabbit mAb at 1:1000. Secondary antibody: HRP Goat Anti-Rabbit IgG (H+L) at 1:5000. Lysates/proteins: 30ug per lane. Blocking buffer: 5% non-fat dry milk in TBST. Detection: ECL Enhanced Kit. Exposure time: 120s.

实验步骤

访问官网浏览详情: www.ablybio.cn