

alpha + beta Synuclein Rabbit mAb

货号: **AYM30030**

产品信息

反应	Human,Mouse,Rat
宿主	Rabbit
克隆性	Monoclonal
预测反应	
应用	WB IF/ICC FC
推荐浓度	WB: 1:500 - 1:2000 IF/ICC: 1:50 - 1:200 FC: 1:20 - 1:50
理论分子量	18kDa
实测分子量	18kDa
形式	Liquid
保存条件	Store at -20°C. Avoid freeze / thaw cycles. Buffer: PBS with 0.75% BSA,50% glycerol,pH7.3.
偶联物	Unconjugated
阳性对照	U-87MG,Mouse brain,Rat brain
细胞定位	actin cytoskeleton,axon,axon terminus,cell cortex,cytoplasm,cytosol,extracellular region,extracellular space,growth cone,lysosome,mitochondrion,nucleus,perinuclear region of cytoplasm,plasma membrane,post synapse,synaptic vesicle membrane
纯化	Affinity purification

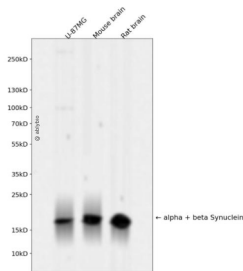
抗原信息

抗原信息	Recombinant fusion protein corresponding to Human alpha + beta Synuclein .
序列	MDVFMKGLSKAKEGVVAAAEEKTKQGVAAEAGKTEKGVLYVGSKTEKGVVHG VATVAEKTKEQVTNVGGAVVTGVTAVA QKTVEGAGSIAAATGFVKKDKQL

靶点信息

研究背景	Alpha-synuclein is a member of the synuclein family, which also includes beta- and gamma-synuclein. Synucleins are abundantly expressed in the brain and alpha- and beta-synuclein inhibit phospholipase D2 selectively. SNCA may serve to integrate presynaptic signaling and membrane trafficking. Defects in SNCA have been implicated in the pathogenesis of Parkinson disease. SNCA peptides are a major component of amyloid plaques in the brains of patients with Alzheimer's disease. Alternatively spliced transcripts encoding different isoforms have been identified for this gene. [provided by RefSeq, Feb 2016]
基因ID	6622,6620
基因名	SNCA,SNCB
Swiss	P37840/Q16143
别名	NACP; PARK1; PARK4; PD1

产品验证



Western blot analysis of alpha + beta Synuclein expressed in U-87MG, Mouse brain, Rat brain using alpha + beta Synuclein Rabbit mAb at 1:1000. Secondary antibody: HRP Goat Anti-Rabbit IgG (H+L) at 1:5000. Lysates/proteins: 30ug per lane. Blocking buffer: 5% non-fat dry milk in TBST. Detection: ECL Enhanced Kit. Exposure time: 120s.

实验步骤

访问官网浏览详情: www.ablybio.cn