

TAPP1 Rabbit mAb

货号: **AYM30024**

产品信息

反应	Human,Mouse,Rat
宿主	Rabbit
克隆性	Monoclonal
预测反应	
应用	WB
推荐浓度	WB: 1:500 - 1:2000
理论分子量	38kDa/45kDa
实测分子量	43kDa
形式	Liquid
保存条件	Store at -20°C. Avoid freeze / thaw cycles. Buffer: PBS with 0.75% BSA,50% glycerol,pH7.3.
偶联物	Unconjugated
阳性对照	HeLa,HepG2,A-549,Jurkat,Mouse lung,Mouse brain,Mouse kidney,Rat brain
细胞定位	Cell membrane,Cytoplasm,Nucleus,Peripheral membrane protein
纯化	Affinity purification

抗原信息

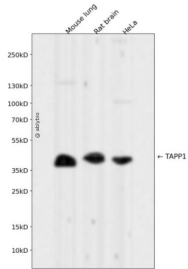
抗原信息	Recombinant fusion protein corresponding to Human TAPP1.
序列	SEHPPGPSESKHAFRPTNAATATSHSTASRSNSLVSTFTMEKRGFYESLAKVKPGNFKVQTVSPREPASKVTEQALLRPQS KNGPQEKDCDLVLDLDDASLPVSDV

靶点信息

研究背景	This gene encodes a pleckstrin homology domain-containing adapter protein. The encoded protein is localized to the plasma membrane where it specifically binds phosphatidylinositol 3,4-bisphosphate. This protein may be involved in the formation of signaling complexes in the plasma membrane. Polymorphisms in this gene are associated with age-related macular degeneration. Alternate splicing results in multiple transcript variants. A pseudogene of this gene is found on chromosome 5.
基因ID	59338

基因名	PLEKHA1
Swiss	Q9HB21
别名	PLEKHA1;TAPP1

产品验证



Western blot analysis of TAPP1 expressed in Mouse lung,Rat brain,HeLa using TAPP1 Rabbit mAb at 1:1 000. Secondary antibody: HRP Goat Anti-Rabbit IgG (H+L) at 1:5000. Lysates/proteins: 30ug per lane. Blocking buffer: 5% non-fat dry milk in TBST. Detection: ECL Enhanced Kit. Exposure time: 120s.

实验步骤

访问官网浏览详情: www.ablybio.cn