

PRSS2 Rabbit mAb

货号: **AYM30023**

产品信息

反应	Human,Mouse,Rat
宿主	Rabbit
克隆性	Monoclonal
预测反应	
应用	WB
推荐浓度	WB: 1:500 - 1:2000
理论分子量	26kDa
实测分子量	30kDa
形式	Liquid
保存条件	Store at -20°C. Avoid freeze / thaw cycles. Buffer: PBS with 0.75% BSA,50% glycerol,pH7.3.
偶联物	Unconjugated
阳性对照	Mouse spleen,Mouse skeletal muscle
细胞定位	Secreted,extracellular space
纯化	Affinity purification

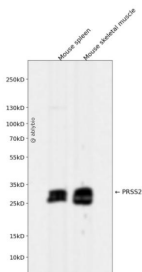
抗原信息

抗原信息	Recombinant fusion protein corresponding to Human PRSS2.
序列	IVGGYICEENSVPYQVSLNSGYHFCGGLISEQWVVSAGHCYKSRIQVRLGEHNIEVLEGNEQFINAAKIIRHPKYNSRTLND DILLIKLSSPAVINSRVSAISLPTAPPAAGTESLISGWGNTLSSGADYPDELQCLDAPVLSQAECEASYPGKITNNMFCVGFL EGGKDSCQGDSSGPPVVSNGELQGVSWGYGCAQKNRPGVYTKVYNYVDWIKDTIAANS

靶点信息

研究背景	This gene belongs to the trypsin family of serine proteases and encodes anionic trypsinogen. It is part of a cluster of trypsinogen genes that are located within the T cell receptor beta locus. Enzymes of this family cleave peptide bonds that follow lysine or arginine residues. This protein is found at high levels in pancreatic juice and its upregulation is a characteristic feature of pancreatitis. This protein has also been found to activate pro-urokinase in ovarian tumors, suggesting a function in tumor invasion. In addition, this enzyme is able to cleave across the type II collagen triple helix in rheumatoid arthritis synovitis tissue, potentially participating in the degradation of type II collagen-rich cartilage matrix. Alternative splicing results in multiple transcript variants.
基因ID	5645
基因名	PRSS2
Swiss	P07478
别名	PRSS2;TRY2;TRY8;TRYP2;trypsin-2

产品验证



Western blot analysis of PRSS2 expressed in Mouse spleen, Mouse skeletal muscle using PRSS2 Rabbit mAb at 1:1000. Secondary antibody: HRP Goat Anti-Rabbit IgG (H+L) at 1:5000. Lysates/proteins: 30ug per lane. Blocking buffer: 5% non-fat dry milk in TBST. Detection: ECL Enhanced Kit. Exposure time: 120s.

实验步骤

访问官网浏览详情: www.ablybio.cn